

LAFAYETTE UTILITIES SYSTEM

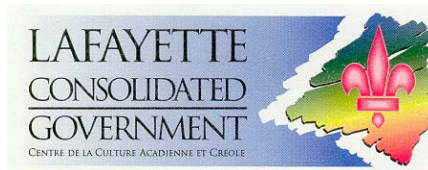
PROCEDURES AND SPECIFICATIONS

FOR

ELECTRIC SERVICES



JANUARY 2007



1314 WALKER RD. . P0. BOX 4017-C LAFAYETTE, LOUISIANA 70502

TABLE OF CONTENTS

<u>SECTION</u>		<u>PAGE</u>
I	GENERAL	
	INTENT	1
	DEFINITIONS	1-3
	REQUIREMENTS AND PROCEDURES	3-4
II	RESIDENTIAL	
	GENERAL	1
	OVERHEAD SERVICE	2
	UNDERGROUND SERVICE TO A UTILITY POLE	3
	UNDERGROUND SERVICE IN A SUBDIVISION WITH UNDERGROUND UTILITIES	4
III	APARTMENTS	
	GENERAL	1
	APARTMENTS WITH INDIVIDUALLY METERED UNITS	2
	APARTMENTS WITH PRIMARY METERING	3
IV	COMMERCIAL	
	GENERAL	1
	OVERHEAD SERVICE	2
	UNDERGROUND SECONDARY SERVICE TO A UTILITY POLE	3
	PADMOUNT TRANSFORMER SERVICES	4
	PRIMARY METERED SERVICES	5
V	DETAILED DRAWINGS	
	COLOR CODING OF SERVICE CONDUCTORS	1-2
	ELECTRIC SERVICE, OVERHEAD	3
	ELECTRIC SERVICE, UNDERGROUND	4
	E SERVICE, OVERHEAD	5
	TEMPORARY SERVICE, UNDERGROUND	6
	480 VOLT METER DISCONNECT	7
	METER INSTALLATIONS	8-11
	SAFETY BARRIERS, RESIDENTIAL	12-17
	SAFETY BARRIERS, COMMERCIAL	18-21
	GROUNDING REQUIREMENTS	22
APPENDIX A - TELEPHONE DIRECTORY		
APPENDIX B - CODE OF ORDINANCES		
	a) CHAPTER 11, "ELECTRICITY"	
	b) CHAPTER 23, "UTILITIES", (ARTICLE 1)	

SECTION I - GENERAL

GENERAL INFORMATION

ARTICLE 1 - INTENT

It is the intent of these procedures and specifications to compile and convey the current requirements of the Lafayette Utilities System (LUS), with regard to electric service. These are subject to change. Please consult latest edition of these procedures and specifications. The content of this manual is based on:

- 1) National Electrical Safety Code
- 2) National Electrical Code
- 3) Occupational Safety and Health Association
- 4) City of Lafayette Code of Ordinances

CERTAIN REQUIREMENTS CONTAINED IN THESE PROCEDURES AND SPECIFICATIONS ARE SUBJECT TO AUTOMATIC CHANGES DUE TO CHANGES IN THE NATIONAL ELECTRIC CODE OR NATIONAL ELECTRIC SAFETY CODE. THE CITY OF LAFAYETTE WILL NOT BE RESPONSIBLE FOR THE OWNER'S FAILURE TO FAMILIARIZE HIMSELF WITH SUCH CHANGES.

THE REQUIREMENTS CONTAINED IN THESE PROCEDURES AND SPECIFICATIONS ARE INTENDED SOLELY FOR THE PURPOSE OF OBTAINING ELECTRICAL SERVICE FROM THE LAFAYETTE UTILITIES SYSTEM. PROCEDURES CONCERNING ANY OTHER DEPARTMENTS WITHIN THE CITY OF LAFAYETTE AND/OR METRO CODE MUST BE OBTAINED FROM SAID DEPARTMENT(S).

ARTICLE 2 - DEFINITIONS

LUS	Lafayette City-Parish Consolidated Government Utilities System.
METRO CODE	Acadiana Metropolitan Code Authority.
OWNER	The Owner and those in his employ such as contractors, architects or engineers.
RESIDENCE	Single family dwelling for the sole purpose of providing a place to live. This does not include an out-dwelling which has residential facilities, on the same lot.
APARTMENT	A building or group of buildings each composed of individual residences.
COMMERCIAL	All services not characterized as being either residential or apartment shall be classified as commercial or general services.

SERVICE The conductors and equipment for delivering energy from the electric supply system to the wiring system of the premises served.

SERVICE CONDUCTORS The supply conductors that extend from the electric supply system to the service equipment of the premises supplied.

SERVICE DROP The overhead service conductors from the last pole or other aerial support to and including the splices, if any, connecting to the service-entrance conductors at the building or other structure.

SERVICE - ENTRANCE CONDUCTORS (OVERHEAD SYSTEM) The service conductors between the terminals of the service equipment and a point usually outside the building, clear of the building walls, where joined by tap or splice to the service drop.

SERVICE - ENTRANCE CONDUCTORS (UNDERGROUND SYSTEM) The service conductors between the terminals of the service equipment and the point of connection to the service lateral.

TEMPORARY SERVICE Service specifically for use during construction, any service to nonpermanent structure such as portable signs, portable buildings, buildings on skids, tents, etc., or any other service of a transient nature.

SERVICE EQUIPMENT The necessary equipment, usually consisting of a circuit breaker or switch and fuses, and their accessories, located near the point of entrance of supply conductors to a building or other structure, or an otherwise defined area, and intended to constitute the main control and means of cutoff of the supply.

ROOF JACK/MAST A length of two inch (2") or larger rigid conduit or other approved facility used for attachment of the service conductors to maintain required clearances.

SECONDARY SERVICE Service provided from the low voltage side of an LUS distribution transformer.

PRIMARY SERVICE Service provided directly from the LUS primary distribution system.

PADMOUNT TRANSFORMER	A single phase or three phase transformer for the connection to an underground primary line and mounted on a concrete pad.
POLEMOUNT TRANSFORMER	Used for connection to an overhead primary line and mounted on a pole. Single phase configuration consists of one transformer. Three phase consists of either two or three transformers, depending on the required voltage needed.

ARTICLE 3 - GENERAL REQUIREMENTS AND PROCEDURES

- 1) All apartment and commercial service requests shall be directed to the LUS Engineering Division. Residential services will conform to the permitting process of Metro Code.
- 2) The following requirements **must** be met before any service will be connected:
 - a) A satisfactory final inspection by Metro Code.
 - b) A deposit received by the Lafayette City-Parish Consolidated Government Revenue Collections Division.
 - c) A certificate of occupancy from Metro Code.
- 3) Service connections will not be made to a service where there is a disconnecting means between the meter and the source, unless approved by LUS prior to construction.
- 4) The attached copy of the City of Lafayette Code of Ordinances is for the user's convenience, however; the user should consult with the City of Lafayette Code of Ordinances for revisions, amendments or additions.
- 5) Payment of deposit(s) shall be made at the Lafayette City-Parish Consolidated Government Revenue Collections office.
- 6) For electric meters that are the property of LUS, it is required that only an authorized representative of LUS break a seal or remove a meter whether the meter is in service or not. Jumpers provided by LUS are to be used for no more than ten days.
- 7) The LUS Electric Operations Division will supply all individual meter bases. Gang meter bases must be furnished by the Owner after approval of LUS. All meter bases shall be installed by the Owner.
- 8) All commercial and residential service requests must be permitted, and must comply with the requirements of Metro Code and the Lafayette City-Parish Consolidated Government Zoning and Development Department. Final inspections for connect orders must be in accordance with the requirements of Metro Code.

- 9) Service requests shall comply with the requirements as dictated in the City of Lafayette Code of Ordinances, Chapter 11, "Electricity", and Chapter 23, "Utilities" (Article 1).
- 10) All above ground electrical devices (cabinets, transformers, pedestals) shall be protected from traffic of any type using appropriate barriers (see details), where there are vehicles passing within a certain proximity of said devices.
- 11) Overhead electric service shall be attached to the Owner's roof/structure at a minimum of twelve feet (12') above final grade. It shall be the responsibility of the Owner to provide a roof jack or other approved means of meeting this requirement. In no case shall the minimum height above grade of the service drop conductors be less than sixteen feet (16') in areas accessible to pedestrians only, eighteen feet (18') across all roads, driveways and parking lots, and twenty-two feet (22') above State highways. It shall be the Owner's responsibility to supply attachment facilities adequate to allow LUS to maintain proper clearance.
- 12) All transformers and pedestals that are requested to be unlocked shall be locked by the requesting electrician prior to leaving the site that day.
- 13) Services that do not have a main disconnect beyond the meter and have the meter pulled because of a delinquent account shall be required to install a main disconnect prior to reconnection of service by LUS.
- 14) Meter bases are issued at 1314 Walker Road, at the warehouse division, between the hours of 7:00a.m. and 3:30p.m. weekdays. Meter bases will be issued at the Meter Department at the rear of the Warehouse. After hours, on an emergency basis, call the Dispatcher at 291-5700. Upon issuance of bases, customer to provide location address, type of the base and contractor's name.
- 15) Upon approval of inspection from Metro Code, the Owner shall contact LUS Engineering to request the connection/reconnection of service. LUS Engineering will notify the Lafayette Consolidated Government Revenue Collection Division to issue a connect order to LUS Field Operations to connect service. The Revenue Collection Division will not issue a connect order until the necessary deposit(s) have been paid by the Owner.
- 16) The Customer is advised to provide protection for three-phase systems against single phasing or reverse phasing. LUS is not responsible to guarantee against these conditions.
- 17) The Customer is advised to contact LUS Engineering before installing any privately owned generators to feed a service.

SECTION II - RESIDENTIAL

RESIDENTIAL SERVICES

ARTICLE 1 - GENERAL

- 1) The standard service provided by LUS for residential use is 120/240V single phase.
- 2) It shall be the Owner's responsibility to supply and install all service equipment and service entrance conductors with the exception of the meter base which will be supplied by the LUS Electric Operations Division and installed by the Owner with the center of the base five and one-half feet (5-1/2') above final grade.
- 3) All requirements for temporary service including inspection, deposit, and connection of service shall be the same as for permanent service.
- 4) The size of the meter base(s) supplied by LUS will be determined by the LUS Electric Operations Division, based on the load information supplied by the Owner.
- 5) All permanent connections to the LUS conductors shall be supplied and made by LUS personnel.
- 6) The Owner is required to contact LUS to determine the source of electric supply prior to construction. The Owner is directed to call the LUS Electric Operations Dispatcher.
- 7) The normal residential service is up to a 200 amp rated service. Should the Owner request a different type, contact the LUS Engineering Division.

ARTICLE 2 - OVERHEAD RESIDENTIAL SERVICE

- 1) Service that is to be furnished by LUS will be at the nearest point of attachment on the building from the utility pole. Overhead electric services will be limited to #4/0 AWG aluminum conductors or equivalent. Overhead electric services exceeding #4/0 AWG aluminum conductors may be allowed only where adequate support is provided at the building and LUS can adequately support the load at the pole. This alternate shall be allowed only by approval of LUS. All service attachments to the building with the exception of the meter base must be furnished by the Owner.
- 2) It shall be the responsibility of the Owner to supply LUS with sufficient information to size the conductor for the permanent service drop at the time the request for temporary construction service is made. The Electric Operations Division will direct the Owner in the placement of the temporary service pole such that the temporary service drop conductor can be used to make the permanent service.
- 3) Where electric service is provided from facilities located in front of a residence, the electric meter must be placed on the front of the residence or no further than half way toward the back on the side of the residence. It shall be the Owner's responsibility to meet this requirement.

ARTICLE 3 - UNDERGROUND RESIDENTIAL SERVICE TO A UTILITY POLE

- 1) The Owner shall be responsible for all conduit and conductors from the service entrance to and up the utility pole (see details).
- 2) All conduit shall be Schedule 40 PVC or heavier below grade and Schedule 80 from a minimum of eight feet (8') above grade to one foot (1') below grade. All conduits shall be placed on the utility pole using six inch (6") standoffs.
- 3) Conduit shall be extended up the utility pole with the approval of and as directed by LUS and shall be attached to the utility pole by approved methods.
- 4) An approved weatherproof termination shall be installed on the end of the conduit at the utility pole.
- 5) Conduit at the utility pole shall be extended below grade with a minimum of twenty-four inches (24") of cover across utility easements and public rights-of-way one foot (1') into the Owners property. Conduit and conductors from that point to the residence shall comply with the requirements of Metro Code.
- 6) Sufficient length of cable shall be provided at the utility pole to reach LUS secondary conductors or transformer bushings and provide a drip loop as directed by LUS.
- 7) Overhead temporary construction service shall be provided from the nearest point of attachment at the utility pole to the contractor's power pole as directed by LUS.
- 8) Where electric service is provided from facilities located in front of a residence, the electric meter must be placed on the front of the residence or no further than half way toward the back on the side of the residence. It shall be the Owner's responsibility to meet this requirement.

ARTICLE 4 - UNDERGROUND RESIDENTIAL SERVICE IN A SUBDIVISION WITH UNDERGROUND UTILITIES

- 1) The Owner shall be responsible for all conduit and conductors from his service entrance to the LUS secondary pedestal or transformer bushing.
- 2) Sufficient length of cable shall be provided to reach the connections in the secondary pedestal or transformer as directed by the LUS Electric Operations Division.
- 3) The general policy of LUS is to provide two inch (2") conduit at the pedestal or transformer for service connections. The Owner shall be responsible for all additional expenses if larger than two inch (2") service conduit is required.
- 4) Temporary construction service shall be provided as directed by the Electric Operations Division through the conduit at the pedestal or transformer provided for this purpose.
- 5) Where electric service is provided from facilities located in front of a residence, the electric meter must be placed on the front of the residence or no further than half way toward the back on the side of the residence. It shall be the Owner's responsibility to meet this requirement.

SECTION III - APARTMENTS

APARTMENT SERVICES

ARTICLE 1 - GENERAL

- 1) All requests for service to apartments will be directed to the LUS Engineering Division.
- 2) All permits and inspections shall be obtained in accordance with the requirements of Metro Code.
- 3) It shall be the responsibility of the Owner to contact the LUS Engineering Division to determine the type and location of service.
- 4) All requirements for temporary service shall be the same as for permanent service including inspection, deposit and connection of service.
- 5) In general, LUS will furnish one temporary service drop without charge to the complex and additional temporary services may be furnished providing such service can be provided from existing facilities. Any additional services and/or charges for such will be determined by LUS.

ARTICLE 2 - APARTMENTS WITH INDIVIDUALLY METERED UNITS

- 1) Standard service to apartments will be handled as follows:
 - a) LUS will provide the Owner with the electrical layout and specifications for the underground primary electrical system to serve the apartments.
 - b) LUS will supply the padmount transformers the riser poles. Delivery of the transformers to the job site is the responsibility of the Owner.
 - c) The Owner will be responsible for the supply and installation of all other electrical facilities including but not limited to all transformer pads, primary cable, terminations, conduit, conduit support brackets, cable supports, secondary cable and connectors.
 - d) LUS will reimburse the Owner based on the number of units in the complex and will assume ownership and maintenance responsibility for the primary electrical system and transformers (refer to Ordinance 3767).
- 2) The LUS Electric Operations Division will supply individual meter bases for each unit, however; if ganged meter bases are desired these shall be supplied by the Owner subject to approval by LUS. The Owner will install all meter bases.
- 3) All meter bases will be clearly marked to indicate the unit served, using permanent tags affixed to the meter. Tags shall be 1" x 3". Tags shall be screwed or riveted onto the meter bases. Lettering shall be inscribed or engraved.
- 4) Pads for padmount transformers and underground conduit runs shall be inspected by the LUS Electric Operations Division prior to pouring concrete for the pads or backfilling trenches (refer to the LUS Procedures for Underground Contractors)
- 5) For small apartment complexes, where it is determined by the LUS Engineering Division that underground service is not feasible, overhead service may be provided. In this case, no reimbursement applies.

ARTICLE 3 - APARTMENTS WITH PRIMARY METERING

- a) The LUS Engineering Division will furnish detailed drawings for all pad, pole framing, pad grounding and trenching details. These details are subject to variations with each individual job and, therefore, typical details are not included with this publication.
- b) The Owner shall supply, install and maintain all equipment on the load side of the metering point.
- c) The metering point will be determined by the LUS Engineering Division.
- d) All primary (High Voltage) equipment, materials and installation procedures on the load side of the meter shall be coordinated with LUS.
- e) LUS will supply and install all primary metering equipment.

ALL TRANSFORMER PADS AND PRIMARY CONDUIT INSTALLATIONS WILL BE INSPECTED BY THE LUS ELECTRIC OPERATIONS DIVISION PRIOR TO POURING THE PAD OR BACKFILLING TRENCHES.

SECTION IV - COMMERCIAL

COMMERCIAL SERVICES

ARTICLE 1 - GENERAL

- 1) All requests for commercial service will be directed to the LUS Engineering Division.
- 2) All requests for commercial service must be accompanied by an electrical riser, a complete description of all electrical load, a site plan adequately describing the location of the project, and the voltage requested.
- 3) All permits and inspections shall be obtained in accordance with the requirements of Metro Code.
- 4) It shall be the responsibility of the Owner to contact the LUS Engineering Division to determine the type and location of service.
- 5) All requirements for temporary service with respect to inspection, deposit, and connection of service shall be same as for permanent service.
- 6) The size of the meter base, supplied by LUS and installed by the Owner, shall be determined by the LUS Engineering Division.
- 7) Location, type, and voltage of the service will be determined by the LUS Engineering Division after considering the Owner's requests.
- 8) Current transformers for metering will be furnished by LUS, however; where there is more than one service from a padmount transformer, the Owner will be required to supply and install a C.T. can or other approved housing (wire trough not acceptable) to house the current transformers, and install the current transformers.
- 9) For all current transformers secondary voltage metering installations, the Owner shall supply and install one inch (1") conduit from the current transformers to the meter base. The LUS Electric Operations Division will supply and terminate the metering cable and the Owner shall be responsible to pull the metering cable in the one inch (1") conduit.
- 10) When remodeling and/or adding load to an existing building, the riser diagram, requested voltage, and load information shall be submitted to Metro Code for approval and forwarded to the LUS Engineering Division.

ARTICLE 2 - OVERHEAD COMMERCIAL SERVICES

- 1) Service that is to be furnished by LUS will be at the nearest point of attachment on the building from the utility pole. Overhead electric services will be limited to #4/0 AWO aluminum conductors or equivalent. Overhead electric services exceeding #4/0 AWG aluminum conductors may be allowed only where adequate support is provided at the building and LUS can adequately support the load at the pole. This alternate shall be allowed only by approval of LUS. All service attachments to the building with the exception of the meter base must be furnished by the Owner.
- 2) It shall be the responsibility of the Owner to supply LUS with sufficient information to size the conductors for the permanent service drop at the time the request for temporary construction service is made. The Engineering Division will direct the Owner in the placement of the temporary service pole such that the temporary service drop conductor can be used to make the permanent service. Temporary service will not be provided until these requirements have been met.

ARTICLE 3 - UNDERGROUND SECONDARY COMMERCIAL SERVICE TO A UTILITY POLE

- 1) The Owner shall be responsible for all conduit and conductors from the service entrance to and up the utility pole.
- 2) A minimum of Schedule 40 PVC shall be provided for the entire length of all underground commercial service below grade and Schedule 80 from a minimum of eight feet (8') above grade to two feet (2') below grade.
- 3) Conduit shall be extended up the utility pole with the approval of and as directed by the LUS Engineering Division and shall be attached to the utility pole by approved methods. Attachment to LUS poles shall be made with 6" standoffs.
- 4) An approved weatherproof termination shall be installed on the end of the conduit at the utility pole.
- 5) A minimum of twenty-four inches (24") of cover to final grade shall be maintained on all underground commercial services, or as required by Metro Code.
- G) Sufficient length of cable shall be provided at the utility pole to reach LUS secondary conductors or transformer bushings and provide a drip loop as directed by the LUS Engineering Division.
- 7) Overhead temporary construction service shall be provided from the nearest point of attachment at the utility pole to the contractor's power pole as directed by the LUS Engineering Division.

ARTICLE 4 - PADMOUNT TRANSFORMER COMMERCIAL SERVICES

- 1) At the request of the Owner, a padmount transformer may be installed near the building service entrance equipment with the following requirements:
 - a) The LUS Engineering Division will design the appropriate layout and will provide the proper specifications and details for the installation of the raceway system which includes a conduit riser, buried conduit and a concrete transformer pad (refer to the LUS Procedures for Underground Contractors). The riser pole will be framed by LUS. Pads for padmount transformers and underground conduit runs shall be inspected by the LUS Electric Operations Division prior to pouring concrete for the pads or backfilling trenches (refer to the LUS Procedures for Underground Contractors). Details are subject to variations with each individual job.
 - b) The Owner will supply and install the raceway system. It is the Owner's responsibility to obtain details for such. The Owner will terminate to the secondary connectors.
- 2) LUS will be responsible for:
 - a) Supplying, installing and terminating the primary high voltage cable at the riser pole and at the padmount transformer.
 - b) Supplying and installing the transformer, as well as delivering same to the site.
- 3) Low voltage secondary metering for padmount transformers shall meet the following conditions:
 - a) LUS will supply the current transformers, metering cable and meter base, as required.
 - b) The Owner will install the meter base, and will supply and install a one inch (1") metering conduit from the transformer to the meter base. The Owner will install the metering cable in the one inch (1") conduit, where C.T. metering is required.
 - c) The Owner will supply and install a current transformer enclosure if more than one customer is supplied from the padmount transformer and C.T. metering is required.
 - d) LUS will terminate the metering cable and install the meter.

ARTICLE 5 - PRIMARY METERED COMMERCIAL SERVICES

- 1) The LUS Engineering Division will furnish detailed drawings for all pads, pole framing, pad grounding and trenching details. These details are subject to variations with each individual job and therefore typical details are not included with this publication. Pad details are limited up to 2000 KVA transformers.
- 2) The Owner shall supply, install and maintain all equipment on the load side of the metering point.
- 3) The metering point will be determined by the LUS Engineering Division.
- 4) All primary (High Voltage) equipment, materials and installation procedures on the load side of the meter shall be coordinated with LUS.
- 5) LUS will supply and install all primary metering equipment.

ALL TRANSFORMER PADS AND PRIMARY CONDUIT INSTALLATIONS WILL BE INSPECTED BY THE LUS ELECTRIC OPERATIONS DIVISION PRIOR TO POURING THE PAD OR BACKFILLING TRENCHES.

SECTION V - DETAILED DRAWINGS

COLOR CODING OF SERVICE CONDUCTORS

THE FOLLOWING IS THE LISTING OF COLOR CODES FOR MARKING SERVICE CONDUCTORS AS SET FORTH BY THE NATIONAL ELECTRICAL CODE AND ADOPTED BY LUS.

1) SINGLE PHASE SERVICES

- a) 120/240v services shall have the neutral marked with a white or gray tape, or have the outer covering of the conductor colored white or gray. The other conductors need not be identified, however, if they are identified, they shall be either black or red only.

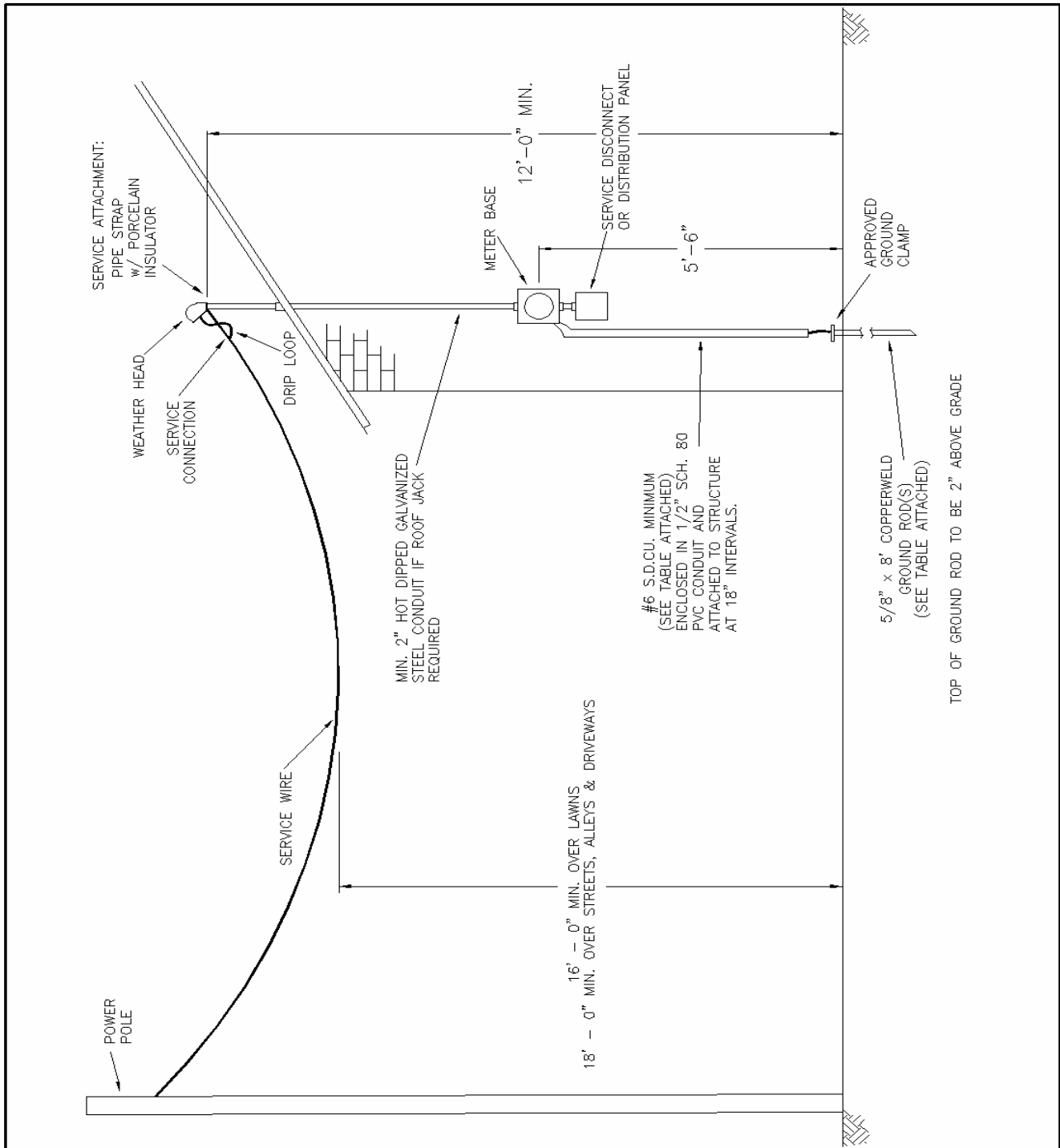
2) THREE PHASE SERVICES

- a) 120/240v three phase four wire services shall have the neutral marked with a white or gray tape, or have the outer covering of the conductor colored white or gray. The wye leg shall be identified by an orange conductor or an orange tape at its termination. In the meter base, the wye leg shall be the C phase or the right leg in the meter base. After the meter stage the wye leg shall be transposed to the B phase or the center leg in the service panel or disconnect.
- b) 120/208v three phase four wire services shall have the neutral identified by a gray or white outer covering, or by gray or white tape. The other conductors shall be identified as such: phase A, black; phase B, red; and phase C, blue, left to right, respectively.
- c) 277/480v three phase four wire services shall have the neutral identified by a gray or white outer covering, or by gray or white tape. The other conductors are identified as: phase A, brown; phase B, orange; and phase C, yellow, left to right, respectively.
- d) 480v three phase three wire systems: The B phase (the grounded phase) shall be identified by a yellow conductor covering or yellow tape at the termination point. The other two conductors need not be identified.

3) GROUNDING CONDUCTOR

- a) The grounding conductor in all cases shall be identified by green coloring.

- 4) For any system where parallel service conductors are used, all conductors shall adhere to the requirements of the type of system being served. Tapings shall occur on the conductors at location as shown below:
 - a) In the meter base and in the service panel, 2' before the lugs.
 - b) At the transformers and pedestals, 12" before the terminations.



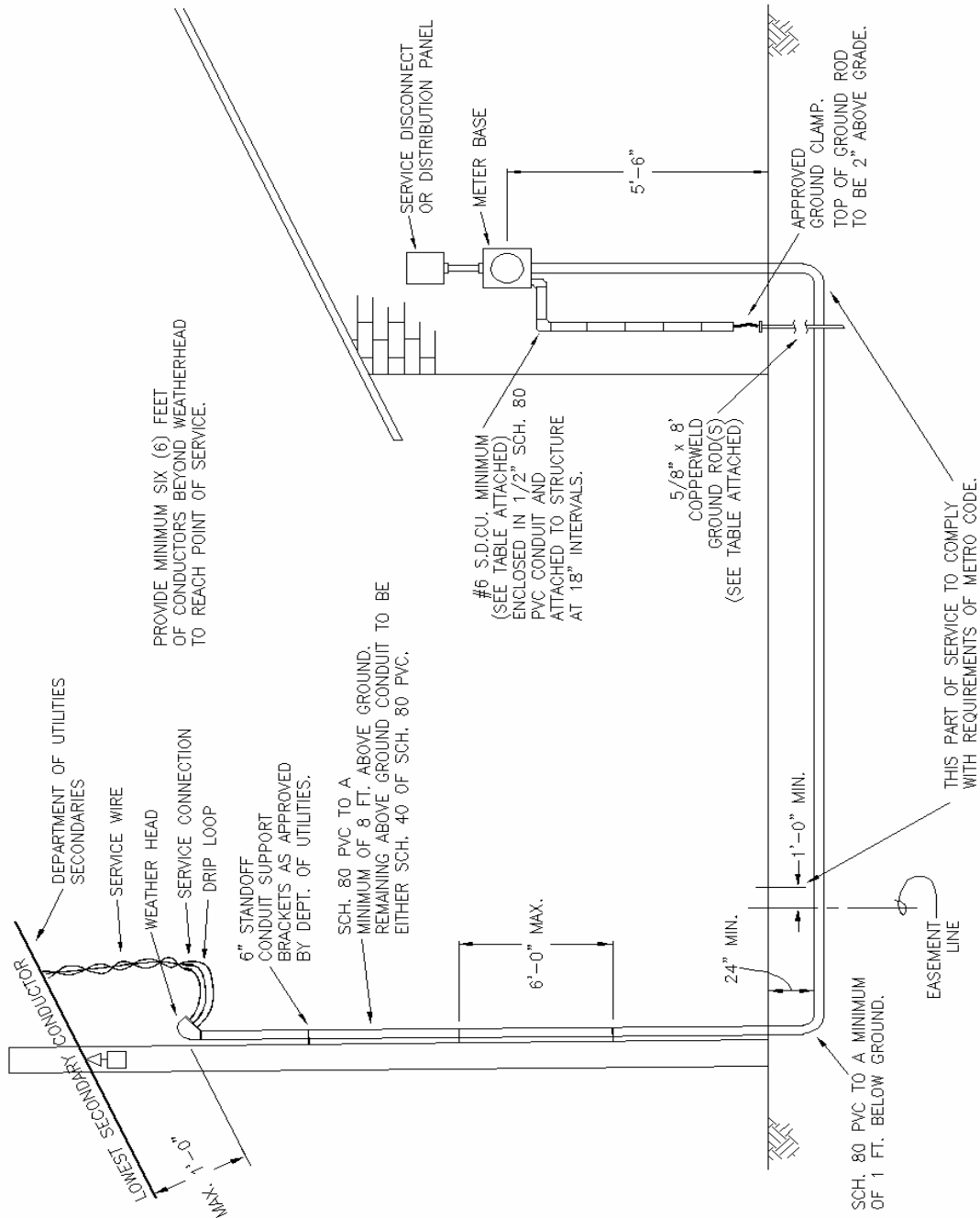
LAFAYETTE
UTILITIES SYSTEM
ENGINEERING DIVISION

ELECTRIC SERVICE DETAIL
OVERHEAD

DWG. NO.
ESO

DATE:
REVISION:

APPROVED:



PROVIDE MINIMUM SIX (6) FEET OF CONDUCTORS BEYOND WEATHERHEAD TO REACH POINT OF SERVICE.

SCH. 80 PVC TO A MINIMUM OF 8 FT. ABOVE GROUND. REMAINING ABOVE GROUND CONDUIT TO BE EITHER SCH. 40 OF SCH. 80 PVC.

#6 S.D.C.U. MINIMUM ENCLOSED IN 1/2" SCH. 80 PVC CONDUIT AND ATTACHED TO STRUCTURE AT 18" INTERVALS.

5/8" x 8' COPPER WELD GROUND ROD(S) (SEE TABLE ATTACHED)

THIS PART OF SERVICE TO COMPLY WITH REQUIREMENTS OF METRO CODE.

LAFAYETTE UTILITIES SYSTEM

ENGINEERING DIVISION

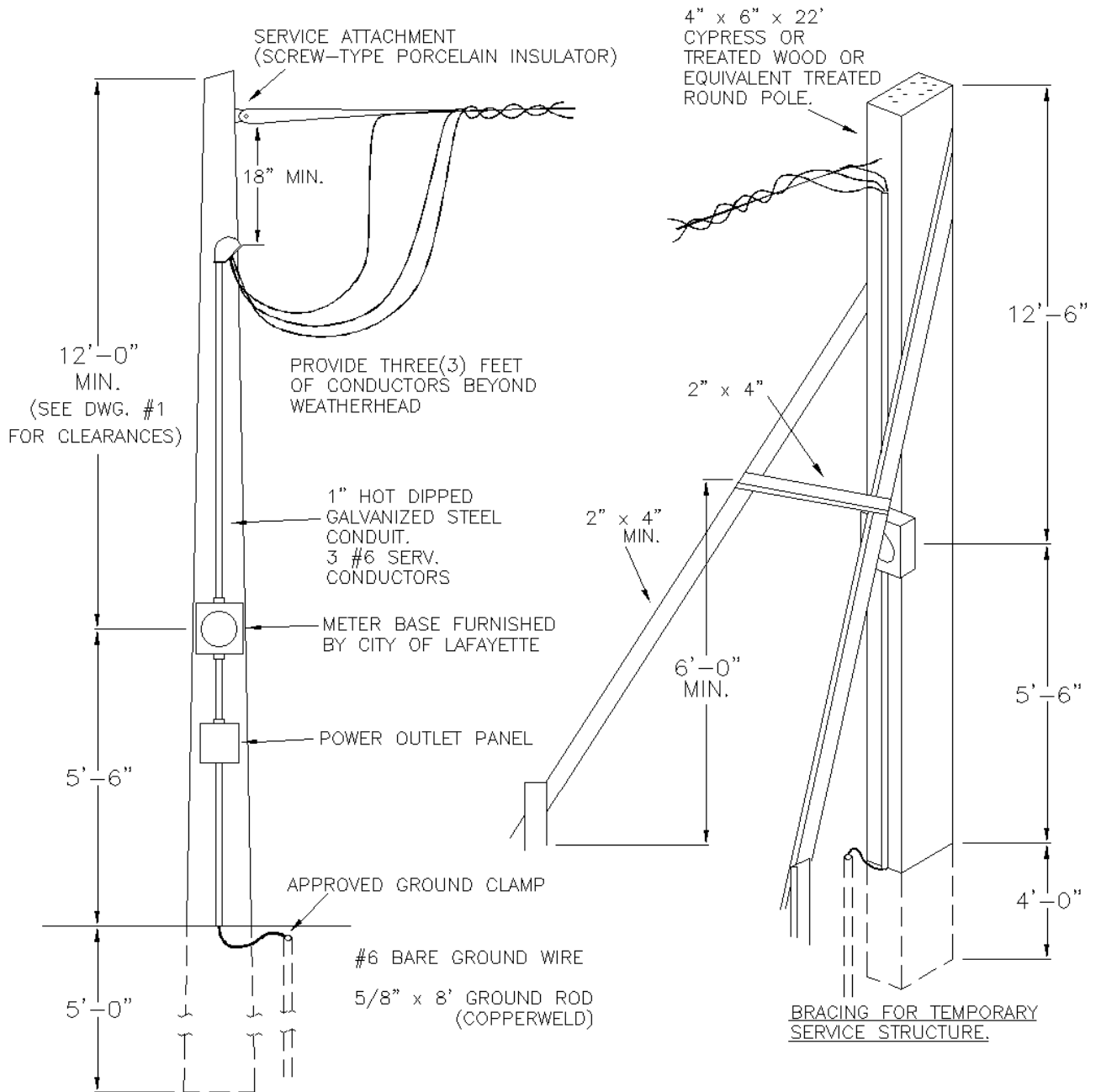
ELECTRIC SERVICE DETAIL
UNDERGROUND SECONDARY
TO A UTILITY POLE

DWG. NO.

ESU

DATE:
REVISION:

APPROVED:



UNBRACED TREATED POLE FOR CONSTRUCTION POWER AND ALL OTHER TEMPORARY SERVICES.

NOTES:

1. TEMPORARY SERVICE STRUCTURES SHALL WITHSTAND THE STRESSES OF SERVICE WIRES AND ATTACHED EQUIPMENT.
2. SERVICE STRUCTURES SHALL BE LOCATED AS DIRECTED BY THE DEPARTMENT OF UTILITIES T & D OPERATIONS DIVISION.
4. THE LAFAYETTE UTILITIES SYSTEM WILL REFUSE TO CONNECT ANY SERVICE NOT PROPERLY INSTALLED.
5. IF BRACES ARE REMOVED FROM POLE, SERVICE WILL BE DISCONNECTED.
6. POWER OUTLET PANEL MINIMUM REQUIREMENTS (EQUAL TO MIDWEST ELECTRIC MODEL P-51-F)
 - (A) 60 AMP MAIN FUSED AT 60 AMP
 - (B) 50 AMP-3 WIRE-250 VOLT RECEPTACLE
 - (C) 1-20 AMP DUPLEX GROUND RECEPTACLE
7. BRACING TO BE PROVIDED FOR ALL POLES FURTHER THAN 75' FROM UTILITIES FACILITIES.

**LAFAYETTE
UTILITIES SYSTEM**

ENGINEERING DIVISION

TEMPORARY ELECTRIC SERVICE
INSTALLATION FROM OVERHEAD
ELECTRIC FACILITIES

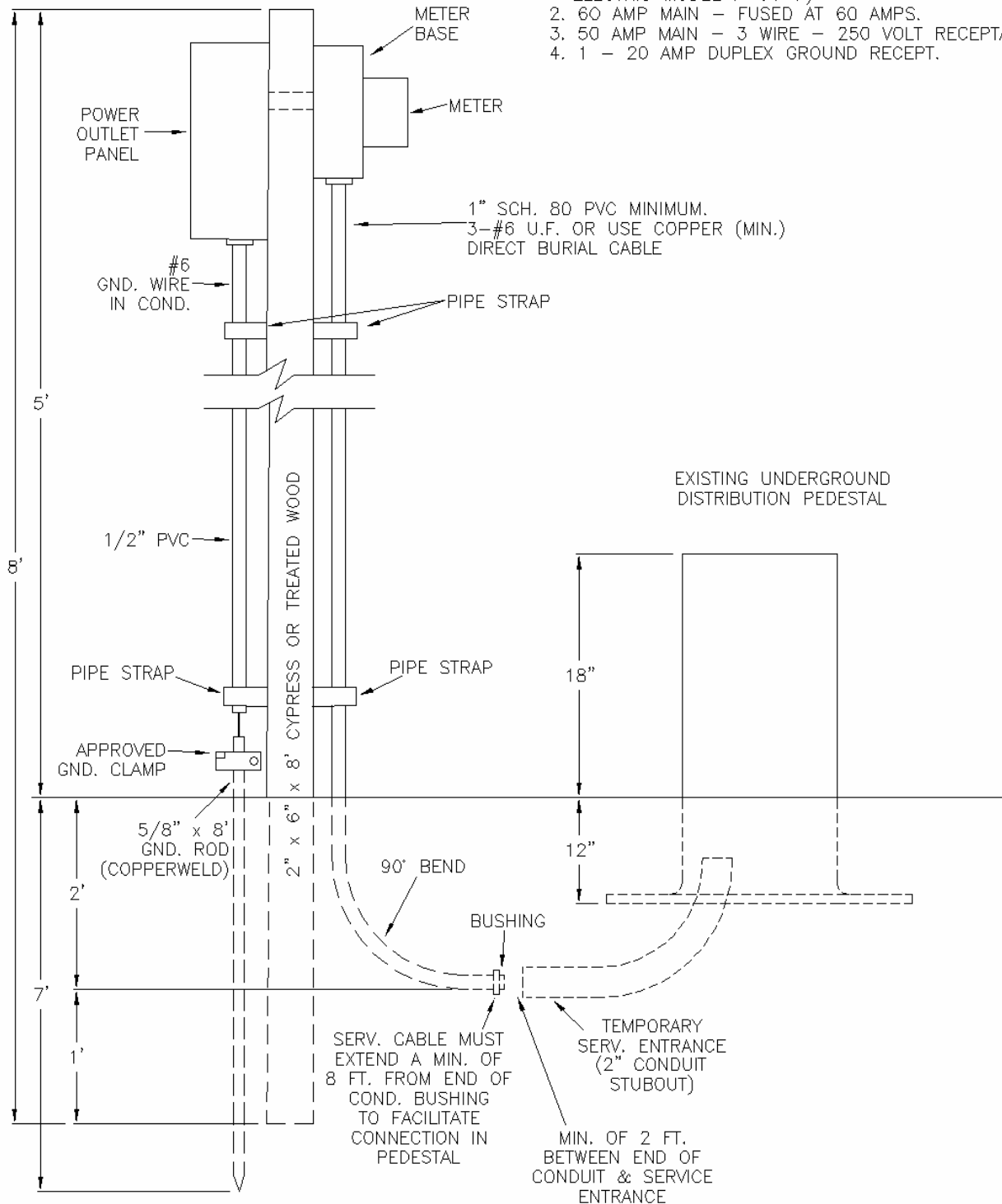
DWG. NO.

ESTO

DATE:
REVISION:

APPROVED:

- PANEL BOX MINIMUM REQUIREMENTS:
1. WEATHER PROOF BOX (EQUAL TO MIDWEST ELECTRIC MODEL P-51-F)
 2. 60 AMP MAIN - FUSED AT 60 AMPS.
 3. 50 AMP MAIN - 3 WIRE - 250 VOLT RECEPTACLE.
 4. 1 - 20 AMP DUPLEX GROUND RECEPT.

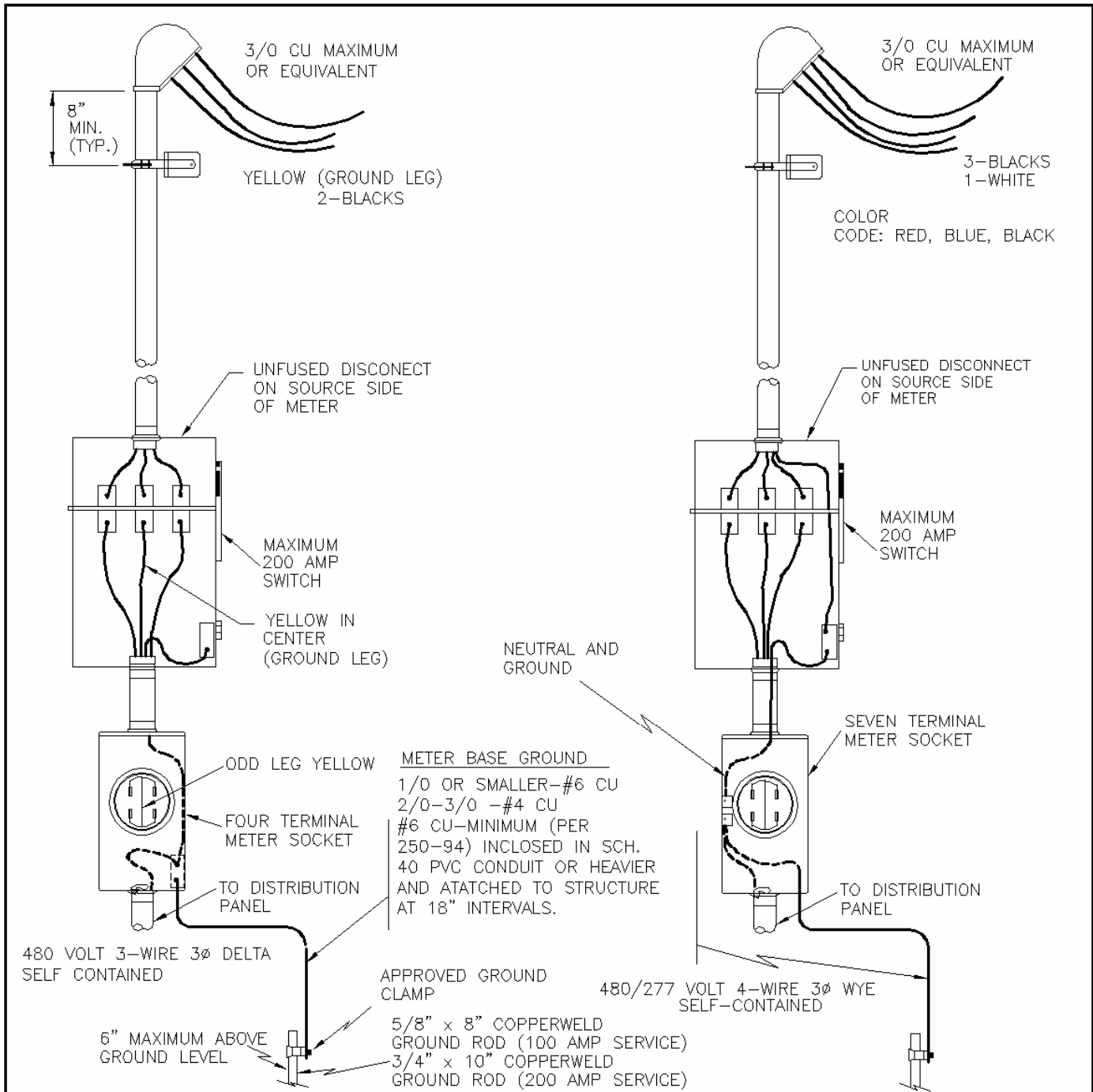


**LAFAYETTE
UTILITIES SYSTEM**
ENGINEERING DIVISION

CONTRACTORS TEMPORARY ELECTRIC
SERVICE IN AN AREA WITH
UNDERGROUND ELECTRIC FACILITIES

DWG. NO.
ESTU

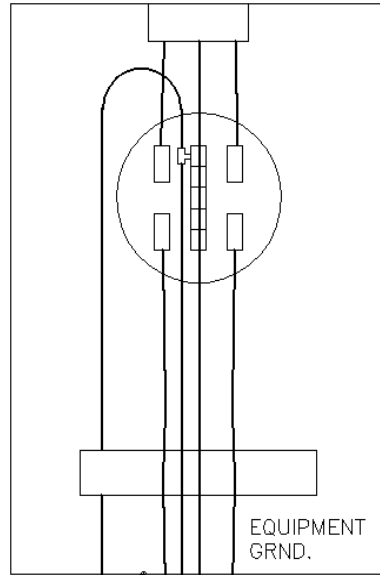
DATE: _____ APPROVED: _____
REVISION: _____



- NOTES:
1. GROUNDING CONDUCTOR TO BE CONTINUOUS FROM GROUND ROD THROUGH METER BASE TO DISCONNECT.
 2. REFER TO DWG. NO. ESM-3.

<p>LAFAYETTE UTILITIES SYSTEM</p> <p>ENGINEERING DIVISION</p>	<p>480 VOLT 3ϕ SERVICE EQUIPMENT ARRANGEMENTS FOR SERVICE 200 AMPS AND SMALLER</p>	<p>DWG. NO. ESMD</p>
<p>DATE: REVISION:</p>	<p>APPROVED:</p>	

120/240V
1 ϕ METER BASE



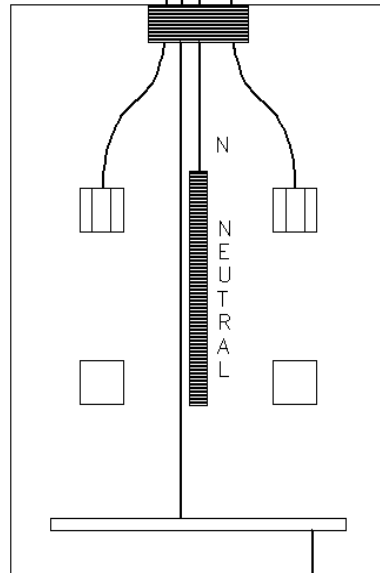
EQUIPMENT
GRND.

1 ϕ SERVICE DISCONNECTING MEANS
OR DISTRIBUTION PANEL

NO. 6 COPPER
MINIMUM (SEE TABLE ATTACHED)
ENCLOSED IN 1/2" SCH. 80 PVC
CONDUIT AND ATTACHED
TO STRUCTURE AT
18" INTERVALS

NOTES:

- 1.) GROUNDING ELECTRODE CONDUCTOR TO BE CONTINUOUS FROM GROUND ROD THROUGH METER BASE TO EQUIPMENT GROUND BUS IN SERVICE DISCONNECTING MEANS.
- 2.) NEUTRAL TO BE CONTINUOUS. CONNECTION IN METER BASE NOT TO BE USED AS SPLICE.



N

NEUTRAL

2"

APPROVED
GROUND CLAMP

TO ADDITIONAL
DISCONNECTS
IF REQUIRED

5/8" x 8' COPPER GROUND ROD(S)
(SEE TABLE ATTACHED)

**LAFAYETTE
UTILITIES SYSTEM**
ENGINEERING DIVISION

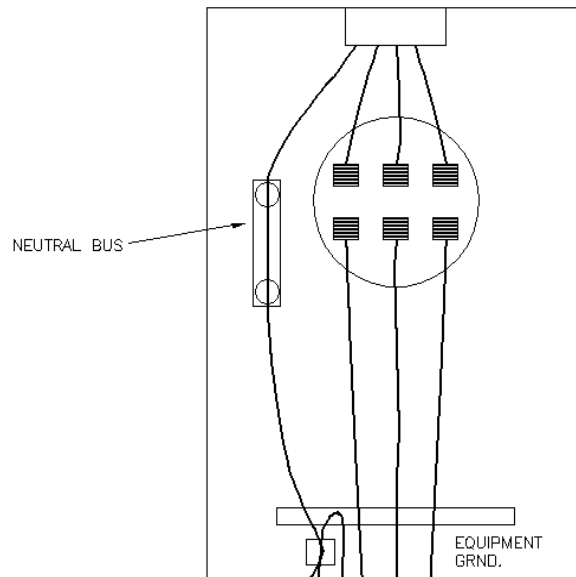
TERMINATION/GROUNDING DETAILS
FOR 1 ϕ 3 WIRE METERING

DWG. NO.
ESM-1

DATE: 1/17/96

APPROVED:

277/480, 120/208, 120/240 VOLTS
3 ϕ SELF-CONTAINED METER BASE

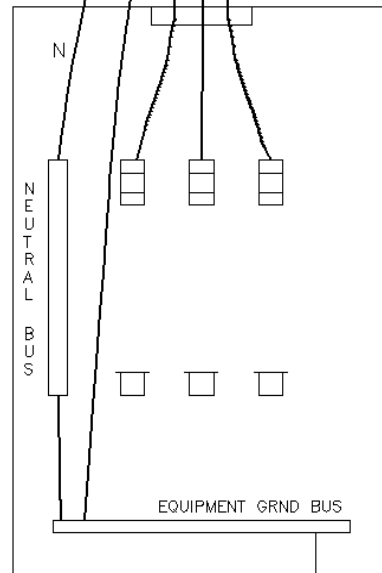


ON ALL 480V INSTALLATIONS, LUS WILL PROVIDE A LINE - SIDE DISCONNECT (ABOVE METER) TO BE INSTALLED BY CUSTOMER OR CONTRACTOR. REFER TO DWG. NO. ESMD.

DISCONNECT WILL BE NON-FUSIBLE TYPE.

SEE SECTION V PAGES 1 AND 2 FOR PROPER COLOR CODING OF CONDUCTORS.

SERVICE DISCONNECT MEANS OR DISTRIBUTION PANEL



NO. 6 COPPER MINIMUM (SEE TABLE ATTACHED) ENCLOSED IN 1/2" SCH. 80 PVC CONDUIT AND ATTACHED TO STRUCTURE AT 18" INTERVALS

NOTES:

- 1.) GROUNDING ELECTRODE CONDUCTOR TO BE CONTINUOUS FROM GROUND ROD THROUGH METER BASE TO EQUIPMENT GROUND BUS IN SERVICE DISCONNECTING MEANS.
- 2.) NEUTRAL TO BE CONTINUOUS. CONNECTION IN METER BASE NOT TO BE USED AS SPLICE.

2"

APPROVED GROUND CLAMP

TO ADDITIONAL DISCONNECTS IF REQUIRED

5/8" x 8' COPPERWELD GROUND ROD OR RODS (SEE TABLE ATTACHED)

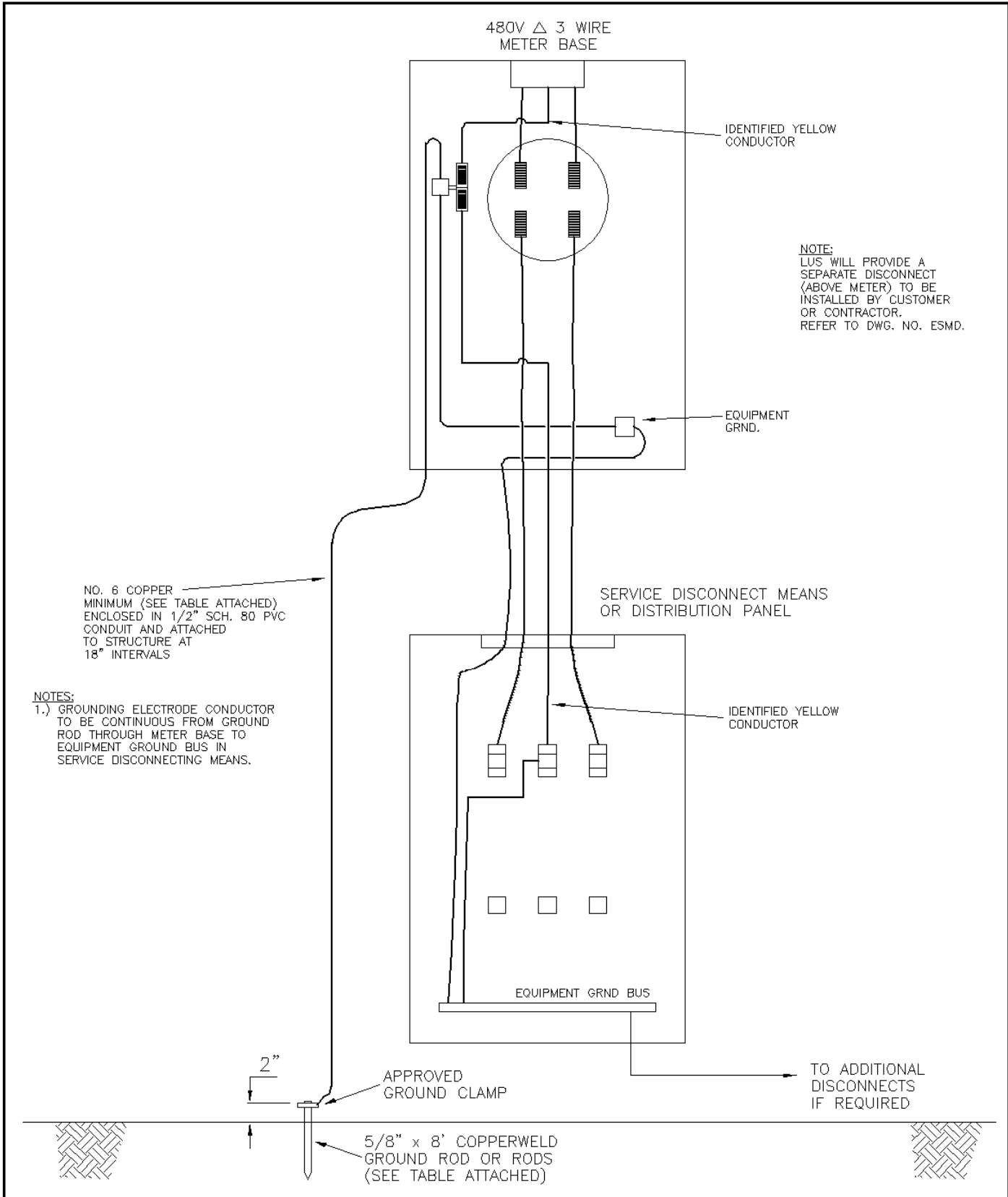
LAFAYETTE
UTILITIES SYSTEM
ENGINEERING DIVISION

TERMINATION/GROUNDING DETAILS
FOR SELF CONTAINED 3 ϕ
4 WIRE METERING

DWG. NO.
ESM-2

DATE: 1/14/96

APPROVED:



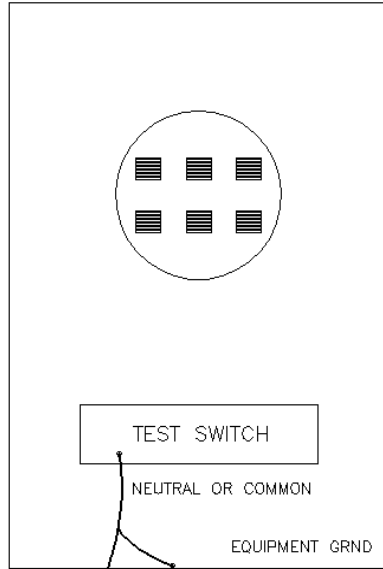
NOTE:
 LUS WILL PROVIDE A
 SEPARATE DISCONNECT
 (ABOVE METER) TO BE
 INSTALLED BY CUSTOMER
 OR CONTRACTOR.
 REFER TO DWG. NO. ESMD.

NO. 6 COPPER
 MINIMUM (SEE TABLE ATTACHED)
 ENCLOSED IN 1/2" SCH. 80 PVC
 CONDUIT AND ATTACHED
 TO STRUCTURE AT
 18" INTERVALS

NOTES:
 1.) GROUNDING ELECTRODE CONDUCTOR
 TO BE CONTINUOUS FROM GROUND
 ROD THROUGH METER BASE TO
 EQUIPMENT GROUND BUS IN
 SERVICE DISCONNECTING MEANS.

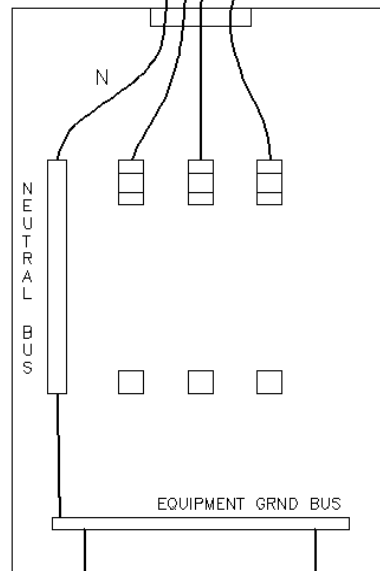
LAFAYETTE UTILITIES SYSTEM ENGINEERING DIVISION		TERMINATION/GROUNDING DETAILS FOR 3 ϕ 3 WIRE METERING (SELF CONTAINED)	DWG. NO. ESM-3
DATE: 1/17/96	APPROVED:		

120/240, 120/208, 277/480 VOLTS, 3 ϕ
CT CABINET METER BASE



SERVICE CONDUCTORS

SERVICE DISCONNECT MEANS
OR DISTRIBUTION PANEL



NO. 6 COPPER
ENCLOSED IN 1/2" SCH. 80 PVC
CONDUIT OR HEAVIER
TO STRUCTURE AT
18" INTERVALS

2"
APPROVED
GROUND CLAMP

NO. 6 COPPER
MINIMUM SEE TABLE
ATTACHED
TO ADDITIONAL
DISCONNECTS
IF REQUIRED

5/8" x 8' COPPERWELD GROUND ROD
OR RODS (SEE TABLE ATTACHED)

LAFAYETTE
UTILITIES SYSTEM
ENGINEERING DIVISION

ELECTRIC SERVICE
GROUNDING DETAILS FOR 3 ϕ
CURRENT TRANSFORMER METERING

DWG. NO.
ESM-4

DATE: 1/17/96

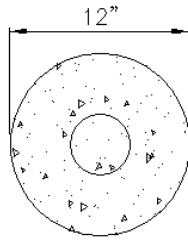
APPROVED:

BARRIERS WILL BE INSTALLED WHERE INDICATED BY THE CITY OF LAFAYETTE UTILITIES DEPARTMENT.

BARRIERS SHALL BE INSTALLED ACCORDING TO THE FOLLOWING SPECIFICATIONS:

1. EACH BARRIER SHALL BE 6' LENGTHS (FOR TRANSFORMER PROTECTION) AND 5' LENGTHS (FOR PEDESTAL PROTECTION) OF 4" (O.D.) GALVANIZED STEEL PIPE WITH 1/4" WALL THICKNESS.
2. HEIGHT OF BARRIER SHALL BE THREE FEET (3') FROM TOP TO GROUND FOR TRANSFORMER PROTECTION AND TWO FEET (2') FROM TOP TO GROUND FOR PEDESTAL PROTECTION.
3. ALL BARRIERS, SHALL HAVE A TWELVE INCH (12") DIAMETER FOUNDATION AND BARRIER SHALL BE FILLED WITH FIVE BAG MIX OF PORTLAND CEMENT MIX.
4. BARRIERS SHALL BE WASHED WITH VINEGAR AND PRIMED WITH RUSTO GALVA GRIP PRIMER.
5. BARRIERS SHALL BE PAINTED WITH RUSTOLEUM (SAFETY YELLOW) RUST PROOF PAINT.

LAFAYETTE UTILITIES SYSTEM ENGINEERING DIVISION		SPECIFICATIONS FOR SAFETY BARRIERS (RESIDENTIAL)	DWG. NO. ESBR 1 OF 6
DATE: 12/28/95	APPROVED:		

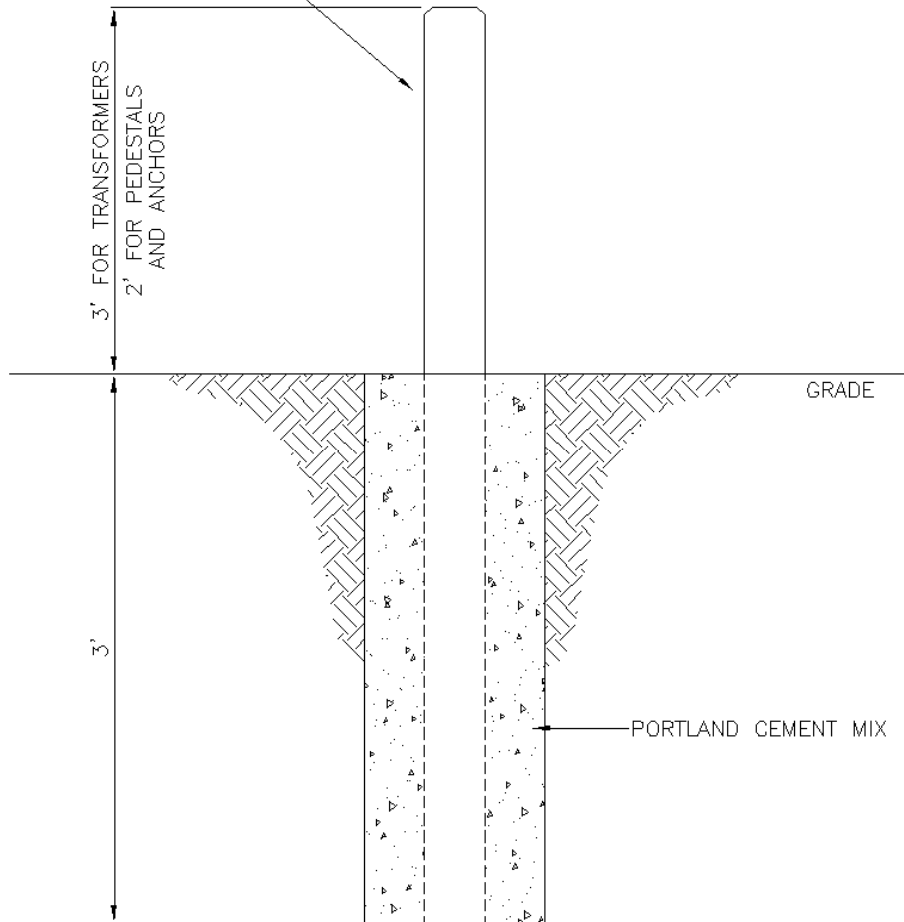


12" DIAMETER
(FOUNDATION)



4" (O.D.) GALVANIZED
STEEL WITH 1/4"
WALL THICKNESS.

PIPE PAINTED WITH
RUSTOLEUM (SAFETY YELLOW)



NOTE:

OWNER/DEVELOPER SHALL BE
ALLOWED TO DROP THE TOP
OF THE FOUNDATION NO MORE
THAN 4" BELOW GRADE.

LAFAYETTE
UTILITIES SYSTEM

ENGINEERING DIVISION

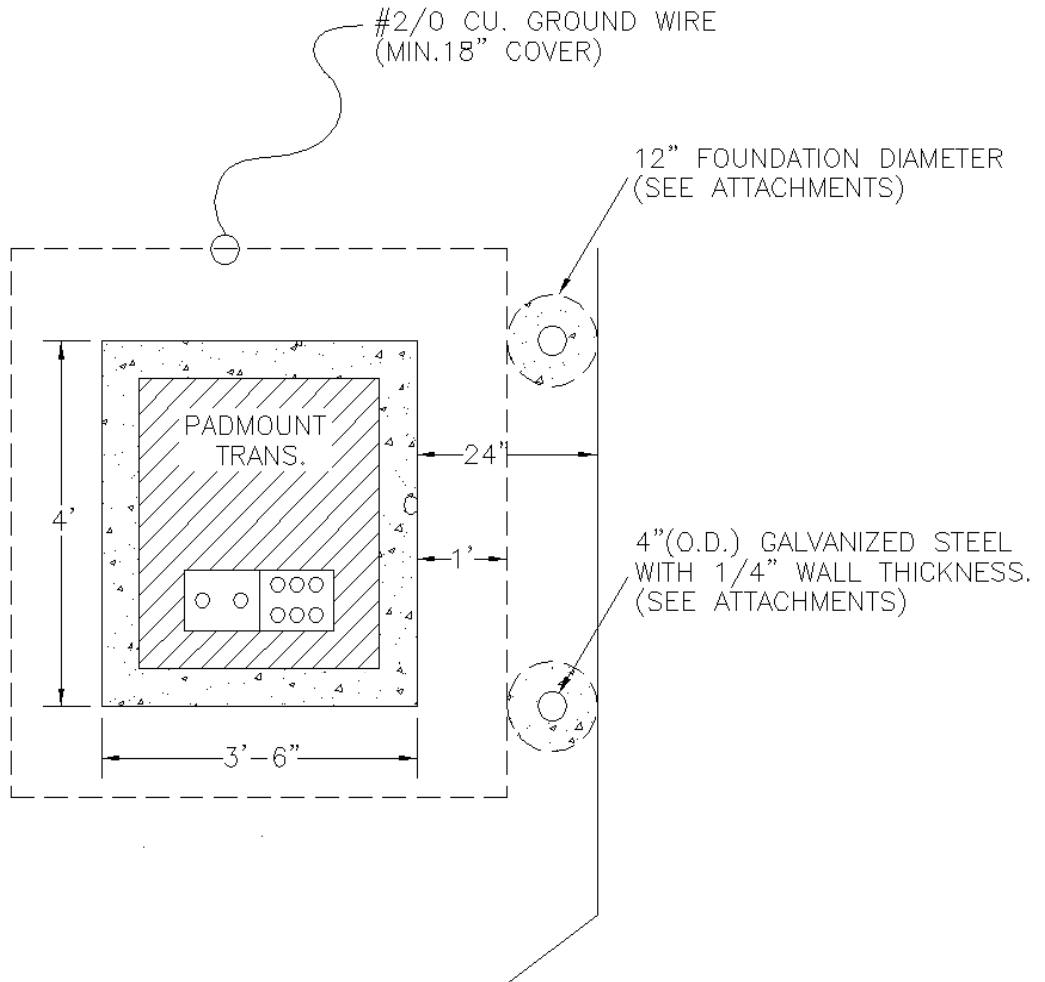
BARRIER DETAIL
(RESIDENTIAL)

DWG. NO.

ESBR
2 OF 6

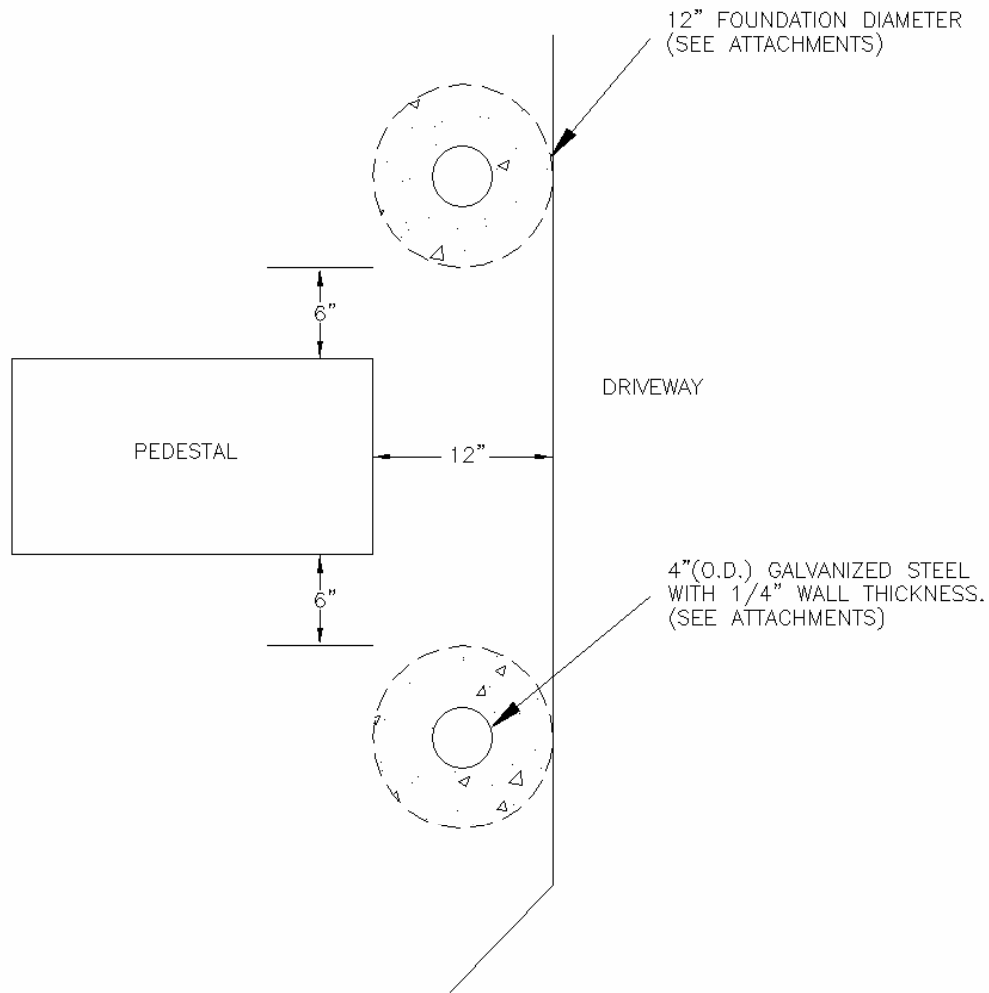
DATE: 12/28/95

APPROVED:



NOTE:
 DRIVEWAY SHALL BE A MINIMUM OF 36" AWAY FROM
 EDGE OF TRANSFORMER. OWNER/DEVELOPER WILL BE
 ALLOWED TO INSTALL DRIVEWAY CLOSER THAN 36"
 FROM TRANSFORMER PROVIDED OWNER/DEVELOPER
 INSTALLS MINIMUM PROTECTION AS SHOWN ABOVE.

LAFAYETTE UTILITIES SYSTEM ENGINEERING DIVISION		DETAIL FOR TRANSFORMER PROTECTION (RESIDENTIAL)	DWG. NO. ESBR 3 OF 6
DATE: 12/28/95	APPROVED:		



NOTE:
 DRIVEWAY SHALL BE A MINIMUM OF 2' AWAY FROM
 EDGE OF PEDESTAL. OWNER/DEVELOPER WILL BE
 ALLOWED TO INSTALL DRIVEWAY CLOSER THAN 2'
 FROM PEDESTAL PROVIDED OWNER/DEVELOPER
 INSTALLS MINIMUM PROTECTION AS SHOWN ABOVE.

LAFAYETTE
 UTILITIES SYSTEM

ENGINEERING DIVISION

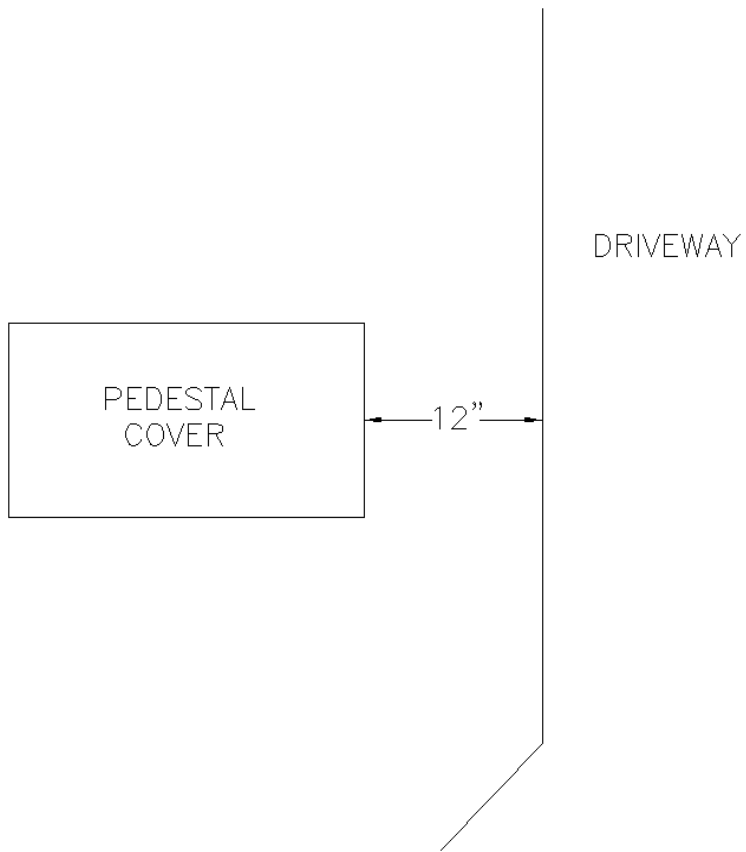
DATE: 04/29/96

APPROVED:

DETAIL FOR
 PEDESTAL PROTECTION
 (RESIDENTIAL)

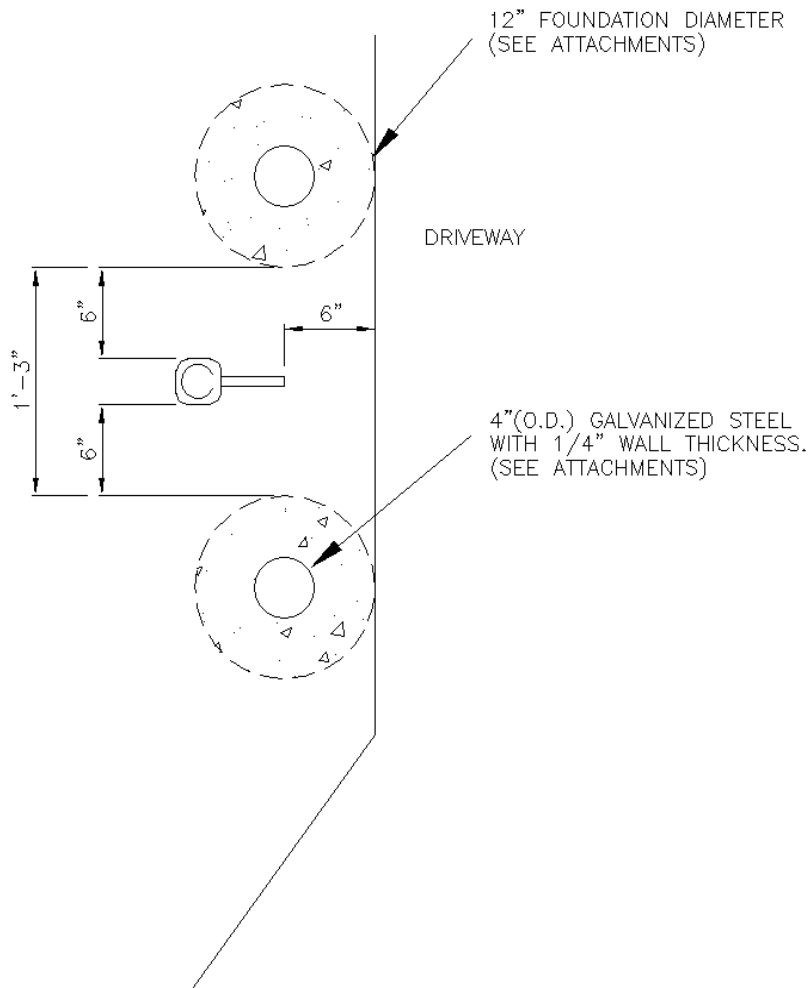
DWG. NO.

ESBR
 4 OF 6



NOTE: DRIVEWAY SHALL BE A MINIMUM OF 1' AWAY FROM EDGE OF PEDESTAL COVER. NO BARRIERS SHALL BE REQUIRED.

<p style="text-align: center;">LAFAYETTE UTILITIES SYSTEM</p> <p style="text-align: center;">ENGINEERING DIVISION</p>	<p style="text-align: center;">DETAIL FOR FLUSH MOUNT PEDESTAL PROTECTION (RESIDENTIAL)</p>	<p style="text-align: center;">DWG. NO.</p> <p style="text-align: center;">ESBR 5 OF 6</p>
<p>DATE: 12/28/95</p>		<p>APPROVED:</p>



NOTE:
OWNER/DEVELOPER WILL BE ALLOWED
TO INSTALL DRIVEWAY NEAR ANCHOR
PROVIDED OWNER/DEVELOPER INSTALLS
MINIMUM PROTECTION AS SHOWN ABOVE.

LAFAYETTE
UTILITIES SYSTEM

ENGINEERING DIVISION

DATE: 12/28/95

APPROVED:

DETAIL FOR
ANCHOR PROTECTION
(RESIDENTIAL)

DWG. NO.

ESBR
6 OF 6

BARRIERS WILL BE INSTALLED WHERE INDICATED BY THE CITY OF LAFAYETTE UTILITIES DEPARTMENT.

BARRIERS SHALL BE INSTALLED ACCORDING TO THE FOLLOWING SPECIFICATIONS:

1. EACH BARRIER SHALL BE 10' LENGTHS OF 6" (O.D.) GALVANIZED STEEL PIPE WITH 1/4" WALL THICKNESS.

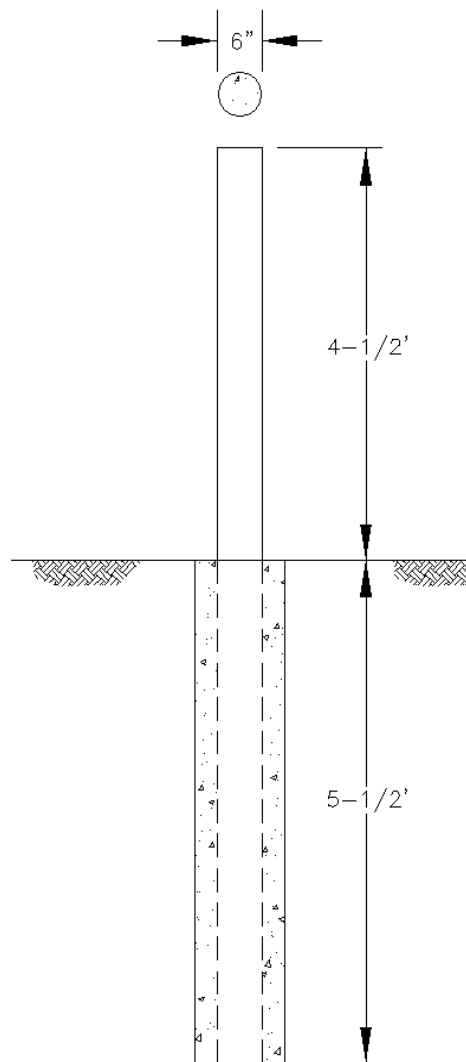
2. HEIGHT OF BARRIER SHALL BE FOUR FEET (4') FROM TOP TO GROUND.

3. ALL BARRIERS, SHALL HAVE A TWELVE INCH (12") DIAMETER FOUNDATION AND BARRIER SHALL BE FILLED WITH FIVE BAG MIX OF PORTLAND CEMENT MIX.

4. BARRIERS SHALL BE WASHED WITH VINEGAR AND PRIMED WITH RUSTO GALVA GRIP PRIMER OR EQUAL PRIMER WITH APPROVAL BY CITY OF LAFAYETTE PRIOR TO QUOTE SUBMITTAL.

5. BARRIERS SHALL BE PAINTED WITH RUSTOLEUM (SAFETY YELLOW) RUST PROOF PAINT OR PAINT APPROVED BY CITY OF LAFAYETTE PRIOR TO QUOTE SUBMITTAL.

LAFAYETTE UTILITIES SYSTEM		SPECIFICATIONS FOR SAFETY BARRIERS (COMMERCIAL)	DWG. NO. ESBC 1 OF 4
ENGINEERING DIVISION			
DATE: 12/28/95	APPROVED:		



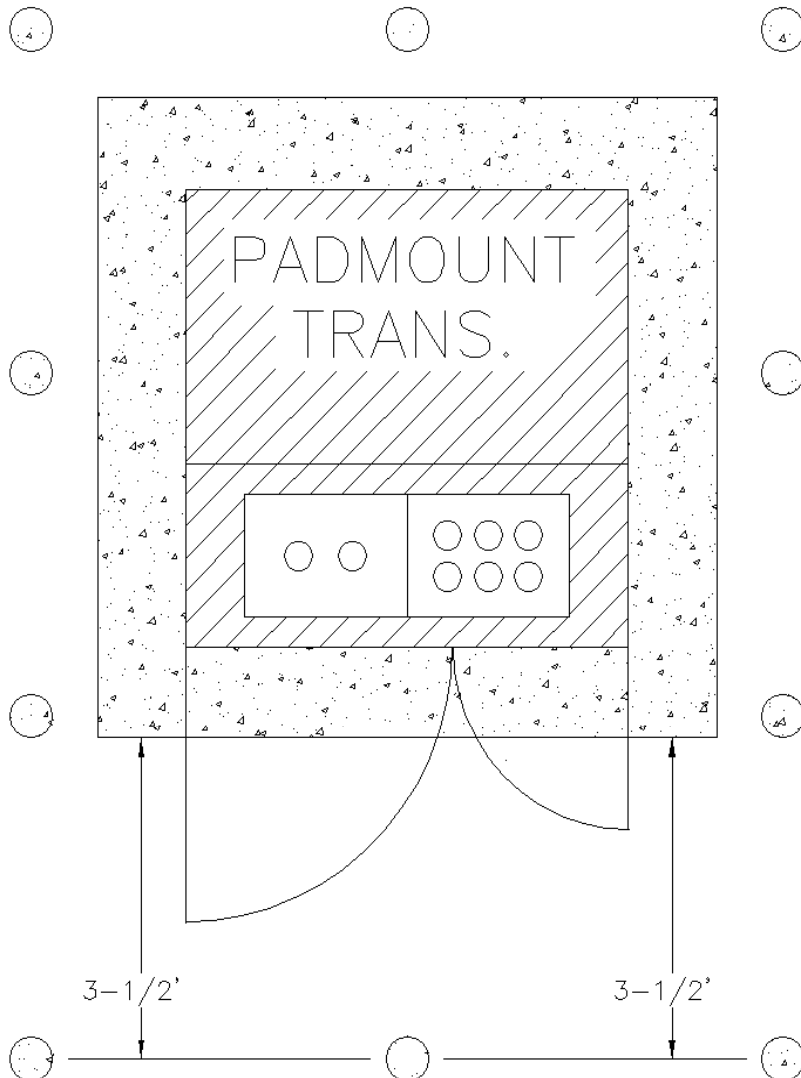
LAFAYETTE
 UTILITIES SYSTEM
 ENGINEERING DIVISION

TYPICAL BARRIER
 (COMMERCIAL)

DWG. NO.
 ESBC
 2 OF 4

DATE: 12/28/95

APPROVED:



LAFAYETTE
 UTILITIES SYSTEM
 ENGINEERING DIVISION

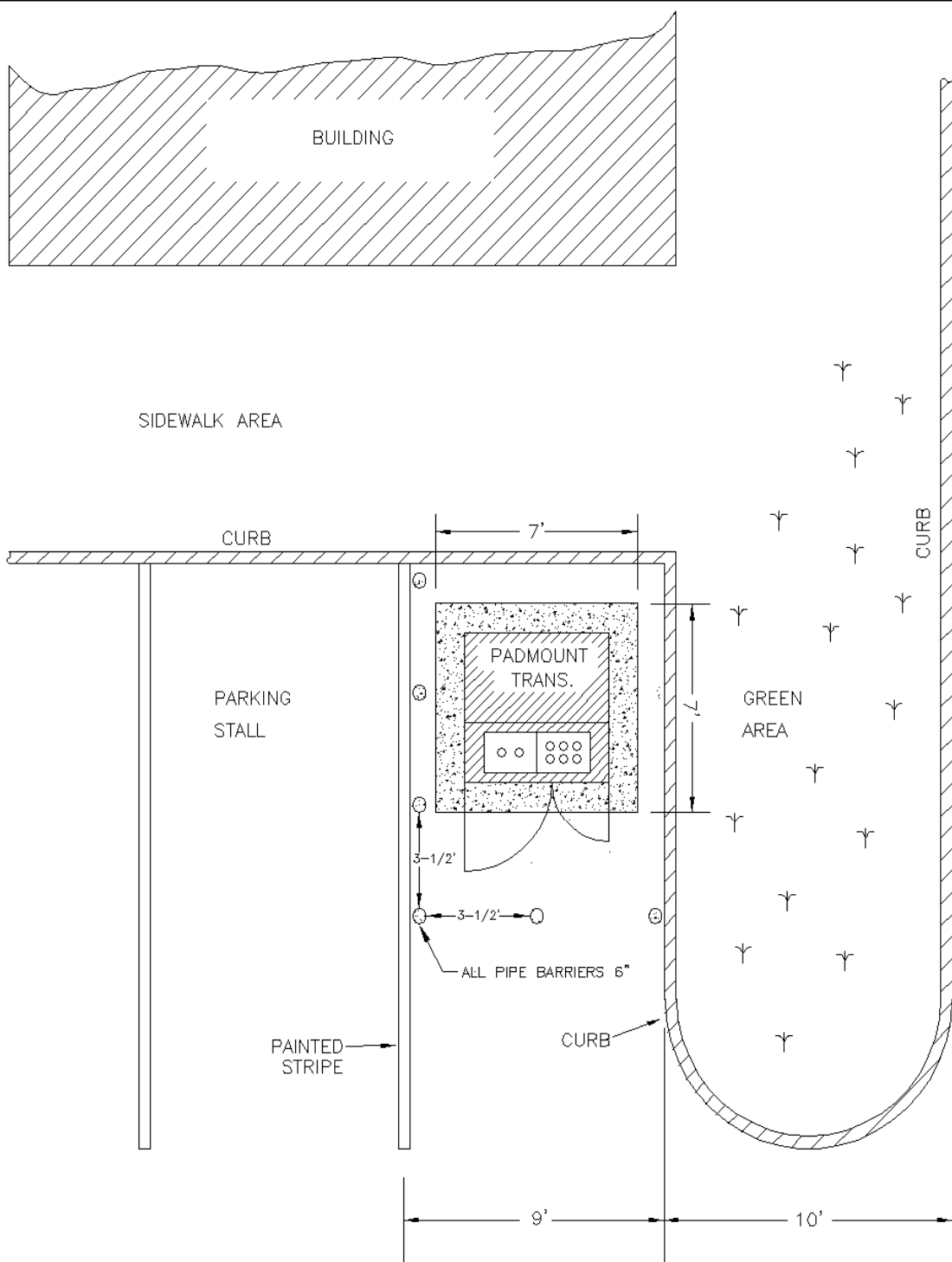
DATE: 12/28/95

APPROVED:

DETAIL FOR
 TRANSFORMER PROTECTION
 COMMERCIAL

DWG. NO.

ESBC
 3 OF 4



**LAFAYETTE
UTILITIES SYSTEM**

ENGINEERING DIVISION

**SAFETY BARRIERS
FOR PADMOUNT TRANSFORMER
(COMMERCIAL)**

DWG. NO.

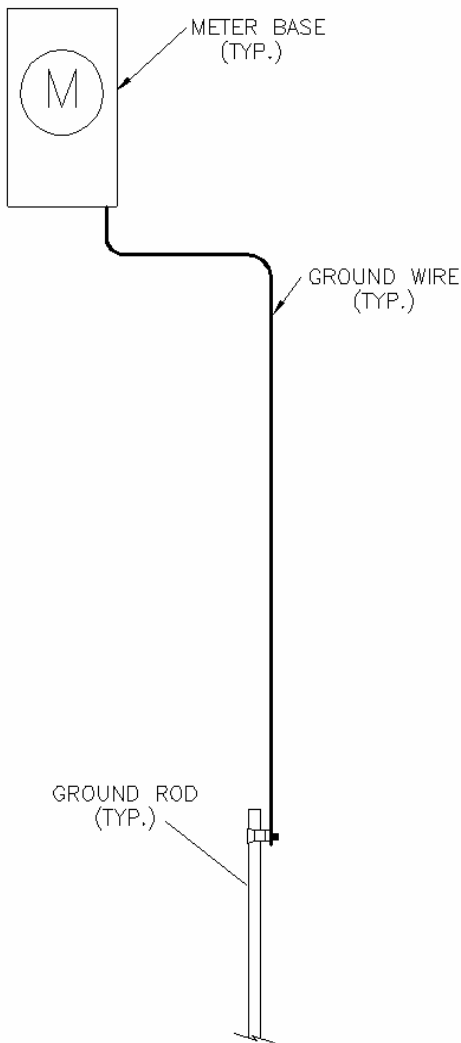
**ESBC
4 OF 4**

DATE: 03/07/96

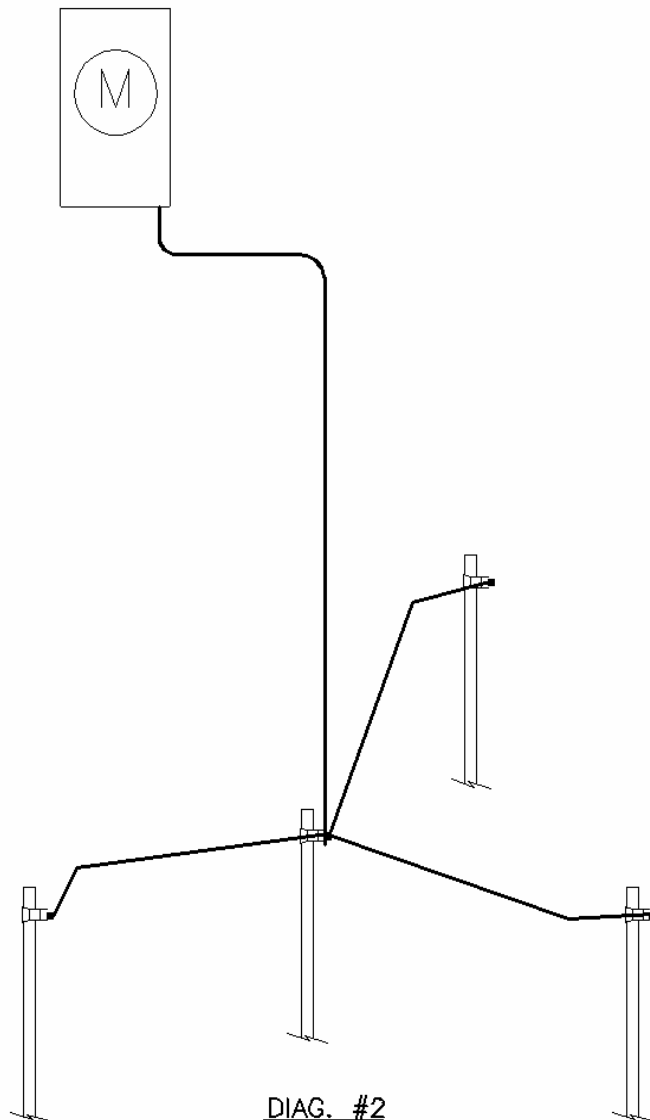
APPROVED:

GROUNDING CONDUCTORS AND RODS ARE INSTALLED FOR THE PURPOSE OF PROVIDING A GROUND CONNECTION FOR THE SECONDARY NEUTRAL AND THE METALLIC BASES OF EQUIPMENT. PROPER GROUND CONNECTIONS ARE ESSENTIAL TO ENSURE LOW IMPEDANCE PATHS TO GROUND FOR FAULT CURRENTS, LIGHTNING, AND STRAY CURRENTS FOR NORMALLY DE-ENERGIZED METALLIC PARTS WHICH, IF ACCIDENTALLY ENERGIZED, MAY BECOME HAZARDOUS TO THE PUBLIC OR UTILITY PERSONNEL.

ALL GROUNDING ELECTRODE SYSTEMS SHALL BE INSTALLED AS DESCRIBED IN THE NATIONAL ELECTRIC CODE (NEC) LATEST VERSION. THE SIZE OF THE GROUNDING ELECTRODE CONDUCTOR SHALL NOT BE LESS THAN GIVEN IN THE NEC, TABLE 250-94. THE GROUNDING ELECTRODE SHALL BE OF THE TYPE AS DESCRIBED IN THE NEC, ART. 250-83(C). SUFFICIENT GROUND RODS SHALL BE DRIVEN TO ACHIEVE A RESISTANCE TO GROUND OF 25 OHMS OR LESS. WHERE MULTIPLE GROUND RODS ARE INSTALLED TO MEET THE REQUIREMENTS OF NEC, ART. 250-84, THEY SHALL BE NOT LESS THAN 6 FEET APART. EACH ADDITIONAL ROD INSTALLED SHALL BE BONDED TO THE FIRST GROUND ROD.



DIAG. #1
ONE GORUND ROD



DIAG. #2
MORE THAN ONE GORUND ROD

**LAFAYETTE
UTILITIES SYSTEM**
ENGINEERING DIVISION

GROUNDING REQUIREMENTS
FOR
SERVICES

DWG. NO.
ESG

DATE:
REVISION:

APPROVED:

APPENDIX A - TELEPHONE DIRECTORY

APPENDIX A - TELEPHONE DIRECTORY

LAFAYETTE UTILITIES SYSTEM - 1314 WALKER ROAD

ENGINEERING	291-5858
ELECTRIC OPERATIONS	291-5700

LAFAYETTE CONSOLIDATED GOVERNMENT - FINANCE

CUSTOMER SERVICE	291-8280
------------------	----------

LAFAYETTE CONSOLIDATED GOVERNMENT - PLANNING, ZONING & CODES

ZONING PERMIT OFFICES	291-8441
	291-8442
CODES PERMITS	291-8461

THESE PHONE NUMBERS ARE SUBJECT TO CHANGE

Revised June 19, 1997

APPENDIX B - CODE OF ORDINANCES

Chapter 11

ELECTRICITY*

Art. I. In General, §§ 11—11-28

Art. II. Permits and Inspections, §§ 11—11-53

Art. III. Electricians, §§ 11—C11-82

Art. IV. Requirements for Service from Department of Utilities, §§ 11—11-88

ARTICLE I. IN GENERAL

Sec. 11-1. Declaration of necessity.

It is deemed necessary and is hereby declared to be a public necessity to regulate electrical wiring and the installation of electrical fixtures in the city in order to prevent the hazard of fire and to provide for safety of the public. (Ord. No. 0-1032, § 1, 9-23-75)

Sec. 11-2. Code adopted.

There is hereby adopted by the city, for the purpose of establishing rules and regulations including the practice, materials, and fixtures used, for the installation, construction, maintenance, extension, removal, demolition, and erection of electrical wiring, construction, electrical signs, and installation of electrical fixtures, machinery, equipment and appurtenances, the National Electrical Code, 1978 Edition, save such exceptions as are hereinafter designated as additions or modifications. The said National Electrical Code, 1978 Edition, of which not less than three (3) copies, have been and are filed in the office of the city clerk and the same is hereby

***Editor's note—Ord. No. 0-1032, § 1**, enacted Sept. 23, 1975, repealed former Ch. 11, relative to electricity, and enacted in lieu thereof a new Ch. 11 pertaining to the same subject matter. Former Ch. 11 was derived from Ord. No. 549, adopted Aug. 27, 1957; Ord. No. 858, adopted Jan. 28, 1969; Ord. No. 893, adopted Nov. 4, 1969; Ord. No. 910, adopted Nov. 10, 1970; and Ord. No. 942, adopted April 25, 1972.

Cross references—Buildings generally, Ch. 8; housing code, § 8-28; fire prevention and protection, Ch. 12; plumbing and gas, Ch. 18; city electrical systems, Ch. 23.
Supp. No. 14

wiring installed prior to August 27, 1957, unless electrical hazards are present.

- (i) Where a building is a combination commercial and residential building the complete building will be subject to the use of the more rigid code of regulations for installation of work, unless provided with separate services.
- (j) Installations having two (2) or more meters shall have each meter loop tagged, giving the street or apartment number it serves. Apartment and office building meters of sections shall be grouped in one common location.
- (k) On new installations or change of location of meter loops, the bottom of the meter base shall be five and one-half (52) feet above the ground.
- (l) It shall be unlawful for any person to change the carrying capacity of any fuse beyond its code capacity.
- (m) It shall be unlawful for any person to use coins or other metallic substances in lieu of proper fuses.
- (n) Electric motors in excess of ten (10) horsepower will be equipped with reduced voltage starting equipment in such a manner that they cannot be started directly across the line, except where waived by the utilities department and the transformer serving the motor serves no other customer and no electric customer would be adversely affected.
- (o) No electrical installation, wiring, construction, maintenance or work in the city shall be performed except by or under the personal supervision of an electrical contractor who has been issued a certificate of competency by the electric board.
- (p) On new installations or change of meter loops, there shall be installed one eight (8) foot by five-eighths ($\sim/8$) inch copperweld ground rod. The ground rod shall be connected to the A.C. system on the supply side of the disconnecting means, as specified in Article 250-25 and 250-53 of the National Electric Code.

business in the city at any time while holding such office as herein provided for. (Ord. No. 0-1032, § 1, 9-23-75)

Sec. 11-6. Enforcement duties of inspector; records required.

It shall be the duty of the chief electrical inspector to see that the provisions of this chapter are enforced. He shall maintain public office hours, receive applications for permits, review plans and specifications of work to be performed, grant permits to qualified persons, inspect all electrical work as required by this chapter, keep adequate records of all permits, inspections, reinspections, defects found and corrections ordered, notices issued, and work performed, and maintain an official register of persons qualified in accordance with the provisions of this chapter and lawfully licensed to engage in the business of electrical work in the city. (Ord. No. 0-1032, § 1, 9-23-75)

Sec. 11-7. Inspector's right of entry; disconnecting dangerous conditions.

The chief electrical inspector or duly appointed assistant electrical inspector shall have the right during reasonable hours to enter any premises within the city in the discharge of official duties, and any premises outside the city when such premises are connected to the city electrical system. The electrical inspector shall have the authority to discontinue or order disconnection of electrical service to any premises or installation found to contain electrical work which is considered unsafe, or a potential hazard to the public in the nature of fire or any means that may endanger human life or property. Discontinuance of electrical service may also be ordered for a premise containing improper or defective electrical work which has been constructed altered, or repaired without a proper permit, inspection or approval. Such premises shall remain disconnected or without electrical service until the defective or hazardous conditions have been corrected, a proper permit has been secured, and the installation has been inspected and approved by the electrical inspector. (Ord. No. 0-1032, § 1, 9-23-75)

Sec. 11-8. Stealing current or interfering with meters.

It shall be unlawful for any person to jump a meter or cause the same to be jumped, or in any way or by any device whatsoever to do any thing which will cause or tend to cause the electric current to go around the meter and not be properly registered. Any person in any way interfering with the proper registration of any meter and the proper operation thereof, or placing any jumper or other devices at or near said meter or any of the electric lines connected to the electric system of the city so as to receive or attempt to receive current without paying the full cost thereof shall be deemed guilty of violating this code. (Ord. No. 0-1032, § 1, 9-23-75)

Secs. 11-9—11-28. Reserved.

Sec. 11-31. Application for permit required; contents.

Any person legally entitled to apply for and receive a permit shall make such application at the office of the chief electrical inspector on forms provided for that purpose. He shall give a description of the character of the work proposed, including lot number, block number, name of the addition or subdivision, street and house number of the premises where work is to be done, name of owner, kind of building, number of stories and a list of electrical fixtures, etc., to be installed, and shall submit plans and specifications of the work to be done, where required by the electrical inspector. (Ord. No. 0-1032, § 1, 9-23-75)

Sec. 11-32. Issuance of permit.

If the electrical inspector determines that the plans, specifications, drawings, descriptions or information furnished by the applicant are in compliance with this chapter, the laws, rules, and regulations of the State of Louisiana pertaining to electricians and electrical work applicable in the city and after receipt of approved plans and/or specifications circulated to the affected departments, he shall issue the permit applied for upon receipt of payment of the required fee. (Ord. No. 0-1032, § 1, 9-23-75; Ord. No. 0-1152, 1-13-76)

Sec. 11-33. Permit fees.

- (a) Every applicant for a permit to install, add to, alter, relocate or replace electrical equipment shall state, in writing on the application form provided for that purpose, the character of work proposed to be done together with such information pertinent thereto, as the electrical inspector may require.
- (b) Such applicant will pay to the division of regulatory codes and permits, for each permit issued and at the time of issuance, a fee in accordance with the following schedule and at the rate provided for each classification shown therein, these fees to include inspection, but not reinspection cost.

General inspection fee \$5.00 plus \$1.00 per each 100 ampere or a fraction thereof added to the existing service.

Per new circuit added.....2.50

(Ord. No. 0-1032, § 1, 9-23-75)

Sec. 11-33.1. Deferred payment of permit fees; bond.

(a) Notwithstanding any other provisions of this chapter, including sections 11-32 and 11-33, payment of permit fees by qualified applicants may be deferred for a period of up to forty-five (45) days from the date of issuance of the permit.

(b) To qualify for deferred payment of permit fees, applicants shall file with the division of regulatory codes and permits a bond executed by the applicant, as principal, and a solvent surety company qualified to do business in the State of Louisiana, as surety, conditioned that the principal therein shall timely and faithfully pay to the City of Lafayette any and all sums due for permit fees, payment of which is deferred under this section, and additionally, for such amounts as shall be due for interest and attorney fees in the event of default as hereinafter provided.

(c) The bond so furnished shall be in the minimum principal sum of five thousand dollars (\$5,000.00), exclusive of applicable interest and attorney fees. Bonds of greater principal sums may be provided by applicants.

(d) In no event shall the aggregate deferred permit fees applicable to any applicant exceed the principal amount of the bond furnished by the applicant.

(e) Any applicant electing to furnish bond as noted above and further electing to defer payment of permit fees, by doing so, agrees to pay in full the amount of said fees within the time period specified in this section. Any failure by the applicant to do so shall, at the option of the city, immediately mature said applicant's obligation on the deferred fee in question, and as well, shall at the city's option mature all

on any electrical job, and a second contractor is called upon to complete the work, in whole or in part, then in that event, a separate permit is required, for which regular fees shall be paid for the work to be done. Before the second contractor is issued a permit for the completion of an electrical job, the electrical inspector shall inspect the work installed under the first permit, to determine if it is installed in and approved manner. The issuance of the second permit shall cancel the first permit and no refund of fees shall be made. (Ord. No. 0-1032, § 1, 9-23-75)

Sec. 11-36. New, altered, repaired installations to be inspected and approved.

It shall be unlawful for any person to knowingly allow or permit the use of electrical power in new, existing, altered or repaired installations until such electrical work has been inspected, tested and approved by the electrical inspector. (Ord. No. 0-1032, § 1, 9-23-75)

Sec. 11-37. Notice required when work ready for inspection; when inspection to be made.

It shall be the duty of the person doing the work authorized by the permit to notify the electrical inspector, orally or in writing, that said work is ready for inspection. Inspection shall be made, within eight (8) hours (Saturdays, Sundays and holidays excluded) after the electrical inspector has been notified that the work is ready for inspection. (Ord. No. 0-1032, § 1, 9-23-75)

Sec. 11-38. Inspection, approval of roughing-in.

When the rough electrical work has been completed on any premises and the electrical inspector notified as set out in section 11-37, he shall cause an inspection to be made of the work while it is under test. If the said electrical work has been installed in accordance with the provisions of this chapter and withstands the prescribed test the electrical inspector shall sign the inspection approval card, noting thereon the date of approval. More than one rough inspection may be made

tion fee as set out in section 11-33, shall be paid by the person authorized by the permit to do the work. (Ord. No. 0-1032, § 1, 9-23-75)

Sec. 11-43. Defects found on reinspection.

If the electrical inspector should upon reinspection find the work incorrectly installed, he shall collect an additional re-inspection fee. If the required changes are not made within a reasonable time, the electrical inspector shall refuse to issue to such person any additional permits until the faulty work has been corrected, and approved. (Ord. No. 0-1032, § 1, 9-23-75)

Secs. 11-44—11-53. Reserved.

ARTICLE III. ELECTRICIANS*

Sec. 11-54. Codes and permits electrical advisory board.

(a) *Created.* There is hereby created a board to be known as the codes and permits electrical advisory board.

(b) *Membership.* This board shall consist of nine (9) adult citizens who shall be taxpayers and qualified voters of the City of Lafayette, one of whom shall be an electrical engineer, two (2) of whom shall be electrical contractors, two (2) of whom shall be journeyman electricians, one of whom shall be in an associated trade or field and three (3) of whom may be associated with any field or profession.

(c) *Appointment terms.* The members of this board shall be appointed by the mayor and each shall hold office as follows: Three (3) members shall be designated by the mayor to hold office for a term of two (2) years from date of appointment; three (3) members shall be designated by the mayor to hold office for a term of three (3) years from date of appointment and three (3) members shall be designated by the mayor to hold office for a term of four (4) years from

***Cross reference**—License tax on contractors, §§ 21-164, 21-165.

imum standards for qualifications to practice the crafts of contractor or specialty contractor in the field of electricity.

- (4) To act as a board of arbitration for the contractor, owner or others who feel that a decision regarding interpretation for the code or a refusal of variance to code is incorrect or unjust.
- (5) To be a review board for the proposed appeal of any sanction applied to a contractor or firm when it is determined by the department of public works, division of codes and permits that a violation of the licensing law has occurred through deliberate acts, i.e.: lending one's license, or whenever a contractor or firm has demonstrated a recurring disregard for the requirements of the codes or city ordinances which concern electrical work.

(f) *Procedure.* The codes and permits electrical advisory board shall establish its own rules of procedure for accomplishment, duties and functions, provided that said rules shall not be in conflict with the provisions of the law of the State of Louisiana or the City of Lafayette.

(g) *Meetings.* Regular or special meetings may be called by the chairman at any time and the chairman shall call a meeting upon request of any three (3) of the members of the board. The department of public works, division of regulatory codes and permits will furnish a meeting place and arrange for such meeting place on request of the chairman of the board or its representatives and give reasonable notice of the place, time and date of such meetings to all members of the board and all interested parties in each case to be heard by the board. The department of public works, division of regulatory codes and permits will also provide a secretary or recording device for proper keeping of the minutes and shall see that all correspondence of the board is properly handled. The director of public works or his representative shall attend all meetings of the board in an advisory capacity. The director of the department of public works shall be made available to the board when called upon by the chairman. Five (5) members

petency, without first passing an examination as provided for in section 11-57, such certificate may be issued by the secretary, subject to the approval of the department of public works, division of regulatory codes and permits. (Ord. No. 0-1032, § 1, 9-23-75; Ord. No. 0-1805, § 4, 6-9-79)

Sec. 11-59. Fees for examination and registration.

The following fee will be charged each applicant for examination and registration:

Electrical contractor _____ \$ 100.00
(Ord. No. 0-1032, §1, 9-23-75; Ord. No. 0-1805, § 5, 6-19-79)

Sec. 11-60. Reexamination after failure to pass.

Any person who fails to pass the examination required by this chapter may apply for reexamination after the expiration of thirty (30) days. Should such person fail to pass the second time, the department of public works, division of regulatory codes and permits may refuse a third examination until after the expiration of three (3) months. After six (6) months, a new application with fees will be required. No refund of fees shall be made. (Ord. No. 0-1032, 1, 9-23-75; Ord. No. 0-1805, § 6, 6-19-79)

Sec. 11-61. Renewal of registration and licenses.

(a) *Required; fee.* Registration must be renewed and all licenses expire December 31 of each year. The following fee shall be charged each applicant for renewal of his certificate of competency.

(1) Electrical contractor _____ \$50.00

(b) *Due date.* These fees shall be paid on or before March 1st of each year except where the applicant for renewal has not performed electrical work during the previous twelve-month period, in which case he shall be re-examined. (Ord. No. 0-1032, § 1, 9-23-75)

Sec. 11-64.1. Report of violations.

It shall be the duty of the inspector to report such violations to the department of public works, division of regulatory codes and permits. (Ord. No. 0-1805, § 9, 6-19-79)

Sec. 11-64.2. Open hearing required to revoke license.

No license shall be revoked until an open hearing has been held by the department of public works, division of regulatory codes and permits, at which hearing the contractor may appear in person and/or be represented by counsel. (Ord. No. 0-1805, § 10, 6-19-79)

Sec. 11-64.3. Term of license suspension; correction of defective work prerequisite to reinstatement.

A license may be suspended for a prescribed period, not to exceed six (6) months, and the suspended contractor shall be required to have corrections made on all work improperly installed before such license is reinstated. (Ord. No. 0-1805, § 11, 6-19-79)

Sec. 11-64.4. Compliance with Section 103.A of Standard Mechanical Code prerequisite to license reinstatement.

The department of public works, division of regulatory codes and permits may require the contractor whose license has been suspended to comply with all the requirements of Section 103.A of the Standard Mechanical Code before such license can be reinstated. (Ord. No. 0-1805, § 12, 6-19-79)

Cross reference—Standard Mechanical Code adopted and amended, §§ 3½-2—3½-4.

Sec. 11-65. Registration required.

Before any person shall carry on or engage in the business of electrical work or labor at the trade of installing electrical wiring and devices, appliances, signs or equipment in the city, he shall first register his name and address with the electrical inspector, together with information as may be required, except as otherwise provided in this chapter. (Ord. No. 0-1032, § 1, 9-23-75)

Sec. 11-69. Certificate of competency prerequisite to license.

Every applicant for an electrical contractor's license shall furnish proof that he is the lawful possessor of a valid certificate of competency. If the applicant is a partnership, firm or corporation, some bona fide member or authorized agent thereof shall be the possessor of a valid certificate of competency who shall at all times be in actual charge of the electricians performing the work. When any person is designated as agent for the applicant, as above provided, one copy of said designation shall be filed with the trustee of finance; provided, however, that any person, firm or corporation heretofore licensed and authorized, who has contracted for electrical work shall be permitted to continue said contraction upon payment of all fees required hereunder. (Ord. No. 0-1032, § 1, 9-23-75)

Sec. 11-70. Licenses not transferable; allowing misuse.

No person holding a contractor's license issued by the city shall lend such license to any other person or allow any other person to do any electrical work under any permit taken out in his name, except certified electricians in his employ and work accomplished under his supervision. A violation of this section shall be grounds for the revocation of such person's license, in addition to being a violation of this code. (Ord. No. 0-1032, §1, 9-23-75)

Sec. 11-71. Established place of business required.

Every licensed electrical contractor must have and maintain an established place of business. He must and shall have someone in attendance to receive complaints or notices for the electrical inspector. His place of business must be where he can be reached by patrons. (Ord. No. 0-1032, § 1, 9-23-75)

Secs. 11-72—11-82. Reserved.

mounted transformer is intended to serve only one customer. (Ord. No. 0-1032, § 1, 9-23-75; Ord. No. 0-1152, 1-13-76)

Sec. 11-87. Requirements for service lines and attachments.

Service that is to be furnished by the department of utilities will be from the nearest point of attachment on the building. Overhead services will be limited to 4/0 aluminum or equivalent. Overhead services exceeding 4/0 aluminum may be allowed only where adequate support is provided at the building and the utilities department can adequately support the load at the pole. This alternate shall be allowed only by approval of the department of utilities. All service attachments to the building must be furnished by the customer. All underground secondary voltage services will be furnished and installed by the customers. (Ord. No. 0-1032, § 1, 9-23-75; Ord. No. 0-1152, 1-13-76)

Sec. 11-88. Contract required for two thousand four hundred (or thirteen thousand eight hundred volt service.

Where two thousand four hundred (2,400) volt or thirteen thousand eight hundred volt (13,800) service is required, the customer will have to negotiate a contract with the department of utilities. Metering will be provided on the primary or secondary at the discretion of the utilities department. (Ord. No. 0-1032, § 1, 9-23-75; Ord. No. 0-1152, § 1-13-76)

[The next page is 543]

Chapter 23

UTILITIES *

Art I. In General, 23-1—23-38

Art. II. Rates, 23-39—23-59

Art III. Exemption Revenues from In-Lieu-of-Tax Formula, § 23-60

ARTICLE I. IN GENERAL

Sec. 23-1. Definitions and interpretation.

The word “director” wherever used in this chapter shall be held and construed to mean the director of utilities or his representative. The word “person” shall be held to mean and include natural persons of either sex, associations, co-partnerships or corporations whether acting by themselves, or by a servant, agent or employee, the singular number shall be held to include the plural and the masculine person to include the feminine. The word “system” shall be held to mean the City of Lafayette, Department of Utilities or its representative. (Ord. No. 398, § 1, 12-27-49; Ord. No. 0-3259, § 1, 6-24-87)

Sec. 23-2. Short name for system.

For the purpose of accepting payment by check, money order or other evidences of cash and for other purposes not involving the validity of any official acts of the system, the short name “Department of Utilities” will be construed to mean “City of Lafayette, Department of Utilities”. (Ord. No. 398, § 37, 12-27-49; Ord. No. 0-3259, § 1, 6-24-87)

Sec. 23-3. Provisions applicable to existing customers.

In all cases where the sale of electric, water or sewage service is being supplied on December 27, 1949, and such

***Cross references**—Regulation of electrical installations, Ch. 11; requirements for service from city electrical system, § 11-83 et seq.; plumbing regulations, Ch. 18; public power authority, Ch. 18¾; sewers and sewage disposal, § 14-12 et. seq.; department of public works to approve excavation permit applications, §19-16.

time without notice to the user, to install a meter or meters at any time without notice to the user, to register the electric current, water or sewage service used or the maximum rate or rates of use of any or all the foregoing services, and shall specify that said contract is subject to all the provisions of this chapter or any ordinance or resolution of the city, including those hereafter passed; and shall provide that the system shall not be held responsible for any damage by fire, flooding or other causes resulting from defective wiring, piping, fixtures or appliances on the premises supplied with electric current, water, or sewage services, installed by the owner or occupant of such premises and the fact that the agents of the system have inspected the wiring, piping, fixtures or appliances, shall not constitute any liability against the system for damages to persons or property resulting from defective wiring, piping, fixtures or appliances installed by the owner or occupant of such premises, and shall provide that in case the supply of electric current or water or the collection of sewage shall be interrupted or fail by reason of accident or any other cause whatsoever, the system shall not be liable for damages for such interruptions or failures nor shall such failure or interruptions for any reasonable period of time be held to constitute a breach of contract on the part of the system or in any way relieve the user of electric current, water or sewage service from performing the obligations of his contract. (Ord. No. 398, § 3, 12-27-49; Ord. No. 0-3259, § 1, 6-24-87)

Sec. 23-7. When contracts and charges begin.

All contracts shall take effect from the day they are signed and rates will be charged and bills rendered for electric current, water, and sewage service from the date or dates the premises are connected respectively with the system's wires carrying electric current, mains supplying water, or mains or laterals for collecting sanitary sewage. Where connection to the system's sewer mains or laterals has been previously made the date of commencement of sewage service shall be the same as the date water or electric service is supplied from any source and the supplying of such water or electric service in such case will automatically mean supplying sewage service. (Ord. No. 398, § 4, 12-27-49; Ord. No. 0-3259, § 1, 6-24-87)

§ 23-9.1 UTILITIES

§ 23-10

prior to November 1, 1974. (Ord. No. 0-449, § 1, 11-20-73; Ord. No. 3259, § 1, 6-24-87; Ord. No. O-4255, § 1, 11-24-92)

Editor's note—Although Ord No. O-449 added this section as 23-9A, it was redesignated 23-9.1 at the editor's discretion, in order to maintain the Code format.

Sec. 23-10. Director's and employees' right of access.

The director shall have free access at any reasonable time to any and all premises furnished with electric current, water, or sewage service by the system for the purpose of inspecting any

1038.1

wires, electric devices, pipes or fixtures on said premises, reading or installing meters and removing or repairing any property of the system or for any other reasonable purpose, connected with the electric, water or sewage collection facilities of the system. (Ord. No. 398, § 7, 12-27-49; Ord. No. 0-3259, §1, 624-87)

Sec. 23-11. Who may make connections.

No person, other than the director, shall connect any house, premises or user with the system's electric, or water facilities for the purpose of securing electric current or water therefrom or for any other purpose whatsoever, and no person other than a duly licensed plumber under the inspection and direction of the director will connect any house, premises, or user to the system's sanitary sewage collection facilities for the purpose of disposing of sanitary sewage or for any other purpose. Any violation of these conditions shall be construed to be a misdemeanor. (Ord. No. 398, § 8, 12-27-49; Ord. No.0-3259, §1, 6-24-87)

Sec. 23-12. Inspections authorized; disconnecting dangerous conditions.

The director may before connecting any premises with the system's circuits or furnishing electric current therefrom, cause the service outlet, metering facilities, wiring, appliances, and fixtures to be carefully inspected and until such service outlet, meter facilities, wiring, appliances and fixtures are located and put in proper condition satisfactory to the director, he may decline to connect the service wires with the system's circuit. The director shall have the power at any time to disconnect the service from any premises where the wiring, appliances or fixtures shall become or are found to be defective or dangerous until the same are repaired to the satisfaction of the director. (Ord. No. 398, § 9, 12-27-49; Ord. No. 0-3259, § 1, 6-24-87)

Sec. 23-13. Notice of additional electrical load required.

Purchasers of electric current are required to notify the director prior to energizing the same of any addition of electrical load to the purchaser's premises not accounted for in the purchaser's original contract with the system. In the event such additional

which may be later established, separate meters must be installed to measure the electric current or water supplied at each rate and the electric current or water registered by each meter must be charged for at prices specified in the rate schedule for such separate uses. (Ord. No. 398, § 15, 12-27-49; Ord. No. 0-3259, § 1, 6-24-87)

Sec. 23-19. Accounts required; billing and collection of charges; delinquency; discontinuing and resuming service.

(a) It shall be the duty of the director of administration to keep accounts of all users of electric current, water or sewage services and to enter on such accounts all charges, and the director of utilities is authorized and empowered to, from time to time and as often as the proper administration of his office shall require, fix the meter reading dates in districts of the area supplied by the system. The dates on which charges against the users of electric current, water or sewage service become due shall be as indicated on the utility bill. Under no circumstances shall the due date be less than fifteen (15) calendar days after the date the bill is mailed.

(b) All charges owed by any person for electric, water and sewage services rendered by the system shall be billed and collected as a unit. Failure of any person to pay said combined charges by the indicated due date shall cause such charges to become past due. If such past due charges are not paid within the time set down in the utility billing and collection procedures and guidelines manual, then services shall be disconnected and shall be reconnected only in accordance with the provisions of such manual. Late payment, reconnection and after-hours charges shall be assessed against said accounts in accordance with said procedures and guidelines.

(c) All payments shall be made in cash or its equivalent and any exchange on checks, money orders, or other evidences of cash must be paid by the customer.

(d) At the time of initiating utility service(s), a connection fee for electric and/or water service will be assessed for each account in accordance with established procedures and guidelines. (Ord.

system, without the consent of such system and with the intent to defraud such system by diverting by any means or device any quantity of electricity or water from the wires, cables, pipes or mains of such system or by preventing the meter or meters furnished by such system from properly registering the quantity of electricity or water passing through such meter or meters, or from registering the full amount of electricity or water actually used or consumed, or by diverting electricity or water around

such meter or meters so as to interfere with the accurate measurement of the electricity or water used.

(b) The presence at any time of any device on or about the utility connection or equipment which if connected would result in the prevention of the proper action or accurate registration of the meter or meters used to measure the amount of utility services rendered, or which would interfere with the proper action or accurate registration of such meter or meters, or the presence of a severed seal, with the establishment of a decrease in such utility bills during certain periods shall constitute prima facie evidence of knowledge of the person, firm or corporation having custody or control of the room, structure or place where such device or wire cables, pipe, main or meter is located, if such person, firm or corporation would benefit from the misappropriation of such utility service.

(c) Whoever commits the crime of theft of utility service is guilty of a misdemeanor and shall be punished by a fine not exceeding two hundred dollars (\$200.00) or imprisonment for a term not exceeding thirty (30) days or by both such fine and imprisonment, within the discretion of the court. Each day any violation of any provision of this section shall continue constitutes a separate offense. (Ord. No. 0-2095, § 1, 6-9-81; Ord. No. 0-3259, § 1, 6-24-87)

Sec. 23-22.2. Tampering with service; disconnection; service charge; penalty.

(a) The presence at any time of any device or the manipulation of any equipment on the premises of any customer on or about the utility connection or equipment of the system or owner utilized in delivering the utility service, which is connected with, or which if connected, would result in the prevention of the proper action or accurate registration of the meter or meters used to measure the amount of utility service rendered or utilized by the customer or which would interfere with the proper action or accurate registration of such meter or meters or accurate registration of the utility service rendered or utilized by the customer shall require the system to disconnect such utility service and the customer shall be required to pay a service charge of thirty-five dollars (\$35.00) to reconnect or reestablish such service. Prior

service charge shall be added to the customer's bill for each utility service which is reconnected or reestablished in conflict with the prohibitions of this paragraph. This charge shall be in addition to the cost of any damages to the system's equipment resulting from the unauthorized reconnection or reestablishment of service, which the system is entitled to recover. (Ord. No. 0-2094, § 1, 6-16-81; Ord. No. 0-2496, § 3, 4-19-81; Ord. No. 0-2821, § 1, 2, 12-11-84; Ord. No. 0-3259, § 1, 6-24-87)

Sec. 23-23. Notice of defective service required.

In case of defective service, notice of the fact shall be sent to the office of the director. (Ord. No. 398, § 29, 12-27-49; Ord. No. 0-3259, § 1, 6-24-87)

Sec. 23-24. Employees not to receive additional compensation.

No inspector, agent, or employee of the system may ask, demand, receive or accept any personal compensation for any service rendered to users of electric current, water or sewage service or other persons, in connection with supplying or furnishing any services by the system. (Ord. No. 398, § 30, 12-27-49; Ord. No. 0-3259, § 1, 6-24-87)

Sec. 23-25. Agreements, representations to be written and signed by director.

No promise, agreement or representation of any employee or agent of the system with reference to the furnishing of electric current, water or sewage service shall be binding on the system unless the same shall be in writing signed by the director or his authorized agents, in accordance with the provisions of this chapter. (Ord. No. 398, §31, 12-27-49; Ord. No. 0-3259, § 1, 6-24-87)

Sec. 23-26. Cutting, removing wires belonging to system.

(a) Whenever it becomes necessary to remove or cut any of the electric wires belonging to the system, either on leads or house service, notice must be given to the director by the person desiring such cutting, or disconnection, stating when and where the same is required and the sum sufficient to cover thereof, as estimated by the director, shall be deposited with the system. and

Conditions:

- (1) The developer shall enter into an agreement with the system prior to commencing work.
- (2) The developer will provide and record easements for all facilities to be owned by the system upon acceptance of the construction work by the system.
- (3) Upon completion and acceptance of the newly constructed facilities by the system, the developer shall donate all facilities to be owned by the system to the system.
- (4) The system will provide the electrical system design and a copy of the system's "Standards for Construction" specifications for the required facilities to be constructed by the developer. The developer shall be responsible for providing the system with a reproducible quality plat of the development and for producing a compiled set of construction plans and specifications utilizing the system's design and standard specifications. Final plans and specifications shall be reviewed and approved by the system prior to commencement of construction to assure that the system's standards have been satisfied.

The developer shall be responsible for securing a qualified electrical contractor to construct the required system. A list of the electrical contractors pre-approved by the director will be provided to the developer. The developer shall be responsible for inspection of the work during construction to assure compliance with the system's standards of construction. It shall be the developer's responsibility to transport the transformers and any other equipment furnished by the system from the system's warehouse to the development site. Any excess material shall be returned upon the completion of the construction. The developer shall be responsible for equipment lost or damaged through negligence, theft or vandalism. The system will not accept the construction work until all facilities are completed according to the approved plans and specifications or with changes approved by the system. All work shall be

<i>Average Lot Size (front foot)</i>	<i>Payment per Lot</i>
41' to 50'	\$325.00
51' to 60'	\$350.00
61' to 70'	\$375.00
71' to 80'	\$400.00
81' to 90'	\$425.00
91' to 100'	\$450.00
100' or more	\$475.00

- (1) Add the front footage of all lots within the subdivision, except corner lots.
- (2) Add the front footage of all corner lots within the subdivision and divide the sum by two (2).
- (3) Divide the sum of (b)(1) and (b)(2) by the total number of lots within the subdivision. This value is the average lot size.
- (4) Multiply the payment per lot associated with the previously determined average lot size by the number of lots within the subdivision. This value is the total payment to be made to the developer provided the conditions in (b)(5), (b)(6) and (b)(7) are satisfied.

The schedule of payments by the system to the developer shall be as follows:

- (5) One-third of the total payment shall be made to the developer, after all electrical construction work is completed and accepted by the system in accordance with plans and specifications.
- (6) One-third of the total payment shall be made to the developer, after ten (10) per cent of the lots within the subdivision have been developed with permanent residential structures.
- (7) One-third of the total payment shall be made to the developer, after twenty (20) per cent of the lots within the subdivision have been developed with permanent residential structures. If twenty (20) per cent or more of the lots within the subdivision have not been developed with permanent residential structures after five (5) years, then the system shall not be obligated to make payment of the final one-third of the total payment.

changes approved by the system. All work shall be inspected and approved by the system (in addition to the developer's inspection) prior to acceptance. Changes in the originally issued plans and specifications shall be approved by the system prior to construction of these changes.

- (5) The street lighting standards (poles), fixtures, mounting brackets, wiring, fuses and other associated equipment shall be installed by the developer. All standards and fixtures shall be as per the system's approved standards for residential lighting. After acceptance of the construction, the system has the option of energizing only those lights which serve a permanent residence.
- (6) Payment to the developer, in accordance with the schedule set forth above, shall be a contribution to partially compensate for the cost of installing the electrical distribution system.
- (7) The facilities to be owned and maintained by the system upon acceptance shall include the complete distribution system and street lighting constructed by the developer in accordance with this agreement. Electrical services (from pedestal or transformer to customer, whichever is applicable) for individual residences shall not be included in the contract for construction under this agreement. It is the responsibility of the developer, or assigned property owner, to install the service when the development is connected and to maintain the service after construction of the dwelling is complete. The system shall not assume ownership of any electrical services.
- (8) Should the developer require temporary electric service before permanent service is available to the subdivision, the developer agrees to pay all costs for such service.

(Ord. No. 936, 10-26-71; Ord. No. O-3259, § 1, 6-24-87; Ord. No. O-3767, § 1, 1-3-91)

Secs. 23-29 – 23-38. Reserved.